

S B 7 4 0 - 9 7 - 3 9 0 0

DEPARTMENT OF THE ARMY SUPPLY BULLETIN

STORAGE SERVICEABILITY STANDARD FOR MECOM MATERIEL

MATERIALS HANDLING EQUIPMENT

**HEADQUARTERS, DEPARTMENT OF THE ARMY
APRIL 1973**

DEPARTMENT OF THE ARMY SUPPLY BULLETIN

**Storage Serviceability Standard for TROSCOM Materiel
MATERIALS HANDLING EQUIPMENT**

**Headquarters, Department of the Army, Washington, DC
4 June 1974**

SB 740-97-3900, 13 April 1973, is changed as follows:

1. Make the following pen-and-ink changes;
Page i. The title is changed to read as shown above.
Page 1-1, paragraph 2, line 3. Change "MECOM" to read "TROSCOM."
Page 1-1, paragraph 5, lines 3 and 4. Change "Mobility Equipment Command, ATTN: AMSME-SP" to read "Troop Support Command, ATTN: AMSTS-SDP."
2. Remove old pages and insert new pages as indicated below. New or changed material is indicated by a vertical bar in the margin of the page. When an appendix is completely changed, the bar will be adjacent to the title only.

Remove pages
A-1 through A-3

Insert pages
A-1 through A-3

3. File this change sheet in front of the publication for reference purposes.

By Order of the Secretary of the Army:

Official:

VERNE L. BOWERS
Major General, United States Army
The Adjutant General

CREIGHTON W. ABRAMS
General, United States Army
Chief of Staff

Distribution:

To be Distributed in accordance with DA Form 12-21 (qty rqr block No. 92) requirements for FSC Group 3910-IL.

APPENDIX A
APPLICABLE ITEMS

National Stock Number	Nomenclature	National Stock Number	Nomenclature
3910-00-056-9410	Conveyor, Belt	3930-00-038-4410	Truck, Lift, Fork
3910-00-141-7186	Conveyor, Belt	3930-00-038-4411	Truck, Lift, Fork
3910-00-141-7187	Conveyor, Belt	3930-00-038-4412	Truck, Lift, Fork
3910-00-141-7213	Conveyor, Belt	3930-00-052-0034	Truck, Straddle, Carry
3910-00-172-8712	Conveyor, Belt	3930-00-053-9166	Truck, Lift, Fork
3910-00-172-8713	Conveyor, Belt	3930-00-053-9176	Truck, Lift, Fork
3910-00-234-4918	Conveyor, Belt	3930-00-053-9192	Truck, Lift, Fork
3910-00-234-8305	Conveyor, Drag	3930-00-053-9196	Truck, Lift, Fork
3910-00-234-8308	Conveyor, Drag	3930-00-053-9229	Truck, Lift, Fork
3910-00-240-7610	Conveyor, Drag	3930-00-053-9230	Truck, Lift, Fork
3910-00-242-2588	Conveyor, Belt	3930-00-053-9231	Truck, Lift, Fork
3910-00-271-1888	Conveyor, Belt	3930-00-053-9232	Truck, Lift, Fork
3910-00-271-1889	Conveyor, Belt	3930-00-056-8209	Truck, Lift, Fork
3910-00-290-4824	Conveyor, Belt	3930-00-060-6793	Truck, Lift, Fork
3910-00-298-7054	Conveyor, Belt	3930-00-064-5868	Truck, Lift, Fork
3910-00-298-7088	Conveyor, Belt	3930-00-064-5871	Truck, Lift, Fork
3910-00-298-7176	Conveyor, Belt	3930-00-064-6563	Tractor, Wheeled, Warehouse
3910-00-298-9624	Conveyor, Belt	3930-00-064-6564	Truck, Lift, Fork
3910-00-298-9625	Conveyor, Belt	3930-00-069-9035	Truck, Lift, Fork
3910-00-298-9626	Conveyor, Belt	3930-00-069-9040	Truck, Lift, Fork
3910-00-298-9627	Conveyor, Belt	3930-00-072-0371	Truck, Lift, Fork
3910-00-298-9628	Conveyor, Belt	3930-00-073-8676	Truck, Lift, Fork
3910-00-298-9629	Conveyor, Belt	3930-00-073-8750	Truck, Lift, Fork
3910-00-298-9630	Conveyor, Belt	3930-00-073-9222	Truck, Lift, Fork
3910-00-298-9632	Conveyor, Belt	3930-00-077-0542	Truck, Lift, Fork
3910-00-407-0405	Conveyor, Belt	3930-00-077-0549	Truck, Lift, Fork
3910-00-514-6263	Conveyor, Belt	3930-00-086-6677	Truck, Lift, Fork
3910-00-515-4135	Conveyor, Belt	3930-00-089-4448	Truck, Lift, Fork
3910-00-790-2175	Conveyor, Belt	3930-00-090-0868	Tractor, Wheeled, Warehouse
3910-00-817-9170	Conveyor, Belt	3930-00-118-7023	Truck, Lift, Fork
3910-00-832-5233	Conveyor, Belt	3930-00-151-4428	Truck, Lift, Fork
3910-00-832-5234	Conveyor, Belt	3930-00-151-4432	Truck, Lift, Fork
3920-00-408-1211	Semitrailer, Straddle	3930-00-151-4434	Truck, Lift, Fork
3920-00-419-5742	Semitrailer, Straddle	3930-00-165-4102	Truck, Lift, Fork
3930-00-017-9079	Truck, Lift, Fork	3930-00-165-4138	Truck, Lift, Fork
3930-00-017-9280	Truck, Powered	3930-00-172-8714	Truck, Lift, Fork
3930-00-025-1015	Truck, Lift, Fork	3930-00-179-1147	Truck, Straddle, Carry
3930-00-035-6728	Truck, Straddle Carry	3930-00-181-3217	Tractor, Wheeled, Warehouse
3930-00-035-6731	Truck, Straddle Carry	3930-00-186-3482	Truck, Stock Selector
3930-00-038-3162	Truck, Lift, Fork	3930-00-214-1024	Truck, Lift, Fork
3930-00-038-3163	Truck, Lift, Fork	2930-00-0214-1027	Tractor, Wheeled, Warehouse
3930-00-038-3164	Tractor, Wheeled, Warehouse	3930-00-223-0599	Truck, Lift, Fork
3930-00-038-3165	Tractor, Wheeled, Warehouse	3930-00-223-0602	Truck, Lift, Fork
3930-00-038-3166	Tractor, Wheeled, Warehouse		

National Stock Number	Nomenclature	National Stock Number	Nomenclature
3930-00-223-0603	Truck, Lift, Fork	3930-00-271-1833	Truck, Lift, Fork
3930-00-223-0604	Truck, Lift, Fork	3930-00-271-1834	Truck, Lift, Fork
3930-00-223-0613	Truck, Lift, Fork	3930-00-271-1835	Truck, Lift, Fork
3930-00-223-0617	Truck, Lift, Fork	3930-00-271-1836	Truck, Lift, Fork
3930-00-223-0618	Truck, Lift, Fork	3930-00-271-1845	Tractor, Wheeled, Warehouse
3930-00-223-0624	Truck, Lift, Fork	3930-00-271-1891	Truck, Lift, Fork
3930-00-223-0627	Truck, Lift, Fork	3930-00-271-1893	Truck, Lift, Fork
3930-00-223-0631	Truck, Lift, Fork	3930-00-271-1894	Truck, Lift, Fork
3930-00-223-6531	Truck, Straddle, Carry	3930-00-271-1899	Truck, Lift, Fork
3930-00-224-8685	Truck, Lift, Fork	3930-00-271-1900	Truck, Lift, Fork
3930-00-230-9948	Tractor, Wheeled, Warehouse	3930-00-271-1901	Truck, Lift, Fork
3930-00-230-9949	Tractor, Wheeled, Warehouse	3930-00-271-1902	Truck, Lift, Fork
3930-00-230-9950	Tractor, Wheeled, Warehouse	3930-00-272-9972	Truck, Lift, Fork
3930-00-235-4674	Truck, Lift, Fork	3930-00-273-2968	Truck, Lift, Fork
3930-00-236-6253	Truck, Lift, Fork	3930-00-273-8203	Truck, Lift, Fork
3930-00-240-8292	Truck, Lift, Fork	3930-00-273-8204	Truck, Lift, Fork
3930-00-240-8295	Truck, Lift, Fork	3930-00-273-8205	Truck, Lift, Fork
3930-00-240-8296	Truck, Lift, Fork	3930-00-273-8206	Truck, Lift, Fork
3930-00-242-3032	Truck, Lift, Fork	3930-00-273-8217	Truck, Lift, Fork
3930-00-242-3033	Truck, Lift, Fork	3930-00-273-8218	Truck, Lift, Fork
3930-00-242-3035	Truck, Lift, Fork	3930-00-273-8219	Truck, Lift, Fork
3930-00-243-5372	Truck, Lift, Fork	3930-00-273-8220	Truck, Lift, Fork
3930-00-253-5492	Truck, Stock Selector	3930-00-273-8221	Truck, Lift, Fork
3930-00-257-4863	Truck, Lift, Fork	3930-00-273-8222	Truck, Lift, Fork
3930-00-257-4864	Truck, Lift, Fork	3930-00-273-8223	Truck, Lift, Fork
3930-00-257-4865	Truck, Lift, Fork	3930-00-273-8226	Truck, Lift, Fork
3930-00-257-4868	Truck, Lift, Fork	3930-00-273-8227	Truck, Lift, Fork
3930-00-265-6851	Tractor, Wheeled, Warehouse	3930-00-273-8228	Truck, Lift, Fork
3930-00-265-6853	Tractor, Wheeled, Warehouse	3930-00-273-8229	Truck, Lift, Fork
3930-00-265-6854	Tractor, Wheeled, Warehouse	3930-00-290-1070	Truck, Lift, Fork
3930-00-265-6860	Tractor, Wheeled, Warehouse	3930-00-292-1098	Truck, Lift, Fork
3930-00-265-6865	Tractor, Wheeled, Warehouse	3930-00-292-1100	Truck, Lift, Fork
3930-00-266-8955	Truck, Lift, Fork	3930-00-298-5327	Tractor, Wheeled, Warehouse
3930-00-266-8956	Truck, Lift, Fork	3930-00-351-9917	Tractor, Wheeled, Warehouse
3930-00-266-8963	Truck, Lift, Fork	3930-00-351-9918	Tractor, Wheeled, Warehouse
3930-00-266-8964	Truck, Lift, Fork	3930-00-351-9919	Tractor, Wheeled, Warehouse
3930-00-266-8965	Truck, Lift, Fork	3930-00-351-9920	Tractor, Wheeled, Warehouse
3930-00-266-8966	Truck, Lift, Fork	3930-00-351-9946	Truck, Lift, Fork
3930-00-266-8967	Truck, Lift, Fork	3930-00-351-9950	Truck, Straddle, Carry
3930-00-271-1449	Truck, Lift, Fork	3930-00-403-5661	Truck, Lift, Fork
		3930-00-403-5662	Truck, Lift, Fork
		3930-00-419-5738	Truck, Lift, Fork
		3930-00-419-5744	Truck, Lift, Fork

National Stock Number	Nomenclature	National Stock Number	Nomenclature
3930-00-436-1411	Truck, Lift, Fork	3930-00-724-4059	Truck, Lift, Fork
3930-00-436-1413	Truck, Lift, Fork	3930-00-724-8145	Tractor, Wheeled, Warehouse
3930-00-449-0433	Truck, Lift, Fork	3930-00-724-8146	Tractor, Wheeled, Warehouse
3930-00-459-5948	Truck, Lift, Fork	3930-00-738-5938	Truck, Lift, Fork
3930-00-465-5869	Truck, Lift, Fork	3930-00-738-6030	Truck, Lift, Fork
3930-00-470-1288	Truck, Lift, Fork	3930-00-781-3855	Truck, Lift, Fork
3930-00-474-0546	Truck, Lift, Fork	3930-00-781-3856	Truck, Lift, Fork
3930-00-479-8769	Truck, Lift, Fork	3930-00-781-3857	Truck, Lift, Fork
3930-00-489-0263	Truck, Lift, Fork	3930-00-781-3858	Truck, Lift, Fork
3930-00-494-8151	Truck, Lift, Fork	3930-00-799-9956	Truck, Lift, Fork
3930-00-514-3477	Truck, Lift, Fork	3930-00-811-4125	Tractor, Wheeled, Warehouse
3930-00-527-9111	Truck, Lift, Fork	3930-00-826-3177	Truck, Straddle, Carry
3930-00-530-2569	Truck, Lift, Fork	3930-00-832-7043	Truck, Lift, Fork
3930-00-531-3908	Truck, Lift, Fork	3930-00-849-2103	Truck, Lift, Fork
3930-00-531-6023	Truck, Lift, Fork	3930-00-849-2104	Truck, Lift, Fork
3930-00-531-6031	Truck, Lift, Fork	3930-00-883-0440	Truck, Lift, Fork
3930-00-541-1960	Truck, Lift, Fork	3930-00-897-4632	Truck, Lift, Fork
3930-00-542-2175	Truck, Lift, Fork	3930-00-987-4633	Truck, Lift, Fork
3930-00-554-1985	Truck, Lift, Fork	3930-00-987-5270	Truck, Lift, Fork
3930-00-554-2318	Truck, Lift, Fork	3930-00-900-8565	Truck, Lift, Fork
3930-00-554-2599	Truck, Lift, Fork	3930-00-903-0899	Truck, Lift, Fork
3930-00-554-2700	Truck, Lift, Fork	3930-00-903-0900	Truck, Lift, Fork
3930-00-554-4354	Truck, Lift, Fork	3930-00-903-3471	Truck, Lift, Fork
3930-00-554-4428	Truck, Lift, Fork	3930-00-926-1041	Truck, Lift, Fork
3930-00-554-4592	Truck, Lift, Fork	3930-00-926-1066	Tractor, Wheeled, Warehouse
3930-00-554-5183	Truck, Lift, Fork	3930-00-926-3807	Truck, Lift, Fork
3930-00-554-5192	Truck, Lift, Fork	3930-00-926-3835	Truck, Lift, Fork
3930-00-555-6290	Truck, Lift, Fork	3930-00-935-7802	Truck, Lift, Fork
3930-00-599-7512	Truck, Lift, Fork	3930-00-935-7855	Truck, Lift, Fork
3930-00-621-7413	Truck, Lift, Fork	3930-00-935-7856	Truck, Lift, Fork
3930-00-641-6541	Truck, Lift, Fork	3930-00-935-7857	Truck, Lift, Fork
3930-00-678-2579	Truck, Lift, Fork	3930-00-935-7864	Truck, Lift, Fork
3930-00-678-2580	Truck, Lift, Fork	3930-00-935-7865	Truck, Lift, Fork
3930-00-678-9056	Truck, Lift, Fork	3930-00-935-7866	Truck, Lift, Fork
3930-00-678-9913	Tractor, Wheeled, Warehouse	3930-00-935-7867	Truck, Lift, Fork
3930-00-678-9914	Truck, Lift, Fork	3930-00-935-7868	Truck, Lift, Fork
3930-00-678-9915	Truck, Lift, Fork	3930-00-935-7963	Truck, Lift, Fork
3930-00-678-9917	Truck, Lift, Fork	3930-00-935-7979	Truck, Lift, Fork
3930-00-679-4457	Truck, Lift, Fork	3930-00-937-0220	Truck, Lift, Fork
3930-00-679-4458	Truck, Lift, Fork	3930-00-937-5636	Truck, Lift, Fork
3930-00-691-3330	Truck, Lift, Fork	3930-00-937-5637	Truck, Lift, Fork
3930-00-709-6342	Truck, Lift, Fork	3930-00-937-5642	Truck, Lift, Fork
3930-00-709-6358	Truck, Lift, Fork	3930-00-937-5644	Truck, Lift, Fork
3930-00-724-3568	Truck, Lift, Fork	3930-00-937-5649	Truck, Lift, Fork
3930-00-724-3570	Truck, Lift, Fork		
3930-00-724-4057	Truck, Lift, Fork		
3930-00-724-4058	Truck, Lift, Fork		

National Stock Number

Synonym for Somenclature

3930-00-937-5650 **Truck, Lift, Fork**
 3930-00-937-5658 **Truck, Lift, Fork**
 3930-00-937-5659 **Truck, Lift, Fork**
 3930-00-937-6175 **Truck, Lift, Fork**
 3930-00-937-6176 **Truck, Lift, Fork**
 3930-00-937-6181 **Truck, Lift, Fork**
 3930-00-937-6185 **Truck, Lift, Fork**
 3930-00-937-6186 **Truck, Lift, Fork**
 3930-00-937-6187 **Truck, Lift, Fork**
 3930-00-953-4890 **Tractor, Wheeled, Warehouse**

 3930-00-954-1303 **Truck, Lift, Fork**
 3930-00-951-9311 **Truck, Lift, Fork**
 3930-00-958-3682 **Truck, Lift, Fork**
 3930-00-958-3683 **Truck, Lift, Fork**
 3930-00-958-3984 **Truck, Lift, Fork**
 3930-00-965-0075 **Truck, Lift, Fork**
 3930-00-965-0108 **Tractor, Wheeled, Warehouse**

 3930-00-965-0109 **Tractor, Wheeled, Warehouse**

 3930-00-965-0110 **Tractor, Wheeled, Warehouse**

 3930-00-965-0113 **Tractor, Wheeled, Warehouse**

 3930-00-965-0122 **Truck, Lift, Fork**
 3930-00-965-0123 **Truck, Lift, Fork**

National Stock Number

Somenclature

3930-00-965-0124 **Truck, Lift, Fork**
 3930-00-965-0125 **Truck, Fork, Reaching**
 3930-00-965-0128 **Truck, Straddle, Carry**
 3930-00-965-0129 **Truck, Straddle, Carry**
 3930-00-965-0132 **Truck, Lift, Fork**
 3930-00-965-0134 **Truck, Lift, Fork**
 3930-00-965-0135 **Truck, Lift, Fork**
 3930-00-965-0136 **Truck, Lift, Fork**
 3930-00-965-0137 **Truck, Lift, Fork**
 3930-0-0965-0139 **Truck, Lift, Fork**
 3930-00-965-0140 **Truck, Lift, Fork**
 3930-00-965-0141 **Truck, Lift, Fork**
 3930-00-973-0301 **Truck, Lift, Platform**
 3930-00-973-0659 **Truck, Lift, Fork**
 3950-00-197-4935 **Crane, Truck, Warehouse**
 3950-00-222-1101 **Crane, Truck, Warehouse**
 3950-00-241-8092 **Crane, Truck, Warehouse**
 3950-00-241-8093 **Crane, Truck, Warehouse**
 3950-00-241-8095 **Crane, Truck, Warehouse**
 3950-00-271-1846 **Crane, Truck, Warehouse**
 3950-00-271-1847 **Crane, Truck, Warehouse**
 3950-00-360-2856 **Crane, Truck, Warehouse**
 3950-00-402-6705 **Crane, Truck, Warehouse**
 3950-00-450-6580 **Crane, Truck, Warehouse**
 3950-00-723-3294 **Crane, Truck, Warehouse**
 3950-00-723-3295 **Crane, Truck, Warehouse**

Supply Bulletin }
 No. 740-97-3900 }

HEADQUARTERS
 DEPARTMENT OF THE ARMY
 Washington, D.C., 13 April 1973

Storage Serviceability Standard for MECOM Materiel

M A T E R I A L S H A N D L I N G E Q U I P M E N T

		Paragraph	Page
Section I.	INTRODUCTION		
	Purpose	1	1-1
	Scope	2	1-1
	Definitions	3	1-1
	General	4	1-1
	Comments	5	1-1
II.	STORAGE AND SPECIAL INSTRUCTIONS		
	Applicable Items	6	2-1
	Preservation, packaging and packing	7	2-1
	Marking	8	2-1
	Storage	9	2-1
	Formation of Lots	10	2-1
	Storage quality control	11	2-1
	Other instructions	12	2-2
	References	13	2-2
Appendix A.	APPLICABLE ITEMS		
B.	PRESERVATION, PACKAGING, PACKING AND MARKING DEFECTS		
C.	ITEM DEFECTS		

*This bulletin supersedes SB 740-3910-97-E01, 26 May 1972; SB 740-3930-97-E01, 7 December 1972 and SB 740-3950-97-E01, 22 June 1970.

SECTION I INTRODUCTION

1. Purpose. This bulletin provides a storage serviceability standard for use in measuring the materiel readiness status of stocks in the custody of supply and storage activities.

2. Scope. This bulletin applies to all Department of the Army CONUS and overseas depots engaged in the receipt, storage and issue of MECOM materiel.

3. Definitions. a. Definitions for the majority of specialized terms used herein can be found in MIL-STD-109, Quality Assurance Terms and Definitions.

b. Definitions for other specialized terms are as follows:

(1) Storage serviceability standard. A written procedure providing storage methods and standards and prescribing the necessary requirements for the surveillance of material in storage.

(2) Surveillance. A system whereby supplies and equipment are subjected to, but not limited to cyclic, scheduled and special inspection and continuous actions to assure that material is maintained in a ready for issue condition.

(3) Visual inspection. An inspection by visual means to observe the item and/or its packaging and packing to detect deficiencies. Visual inspection normally does not require disassembly or testing of the item.

(4) Technical inspection. An inspection by visual means including disassembly, measuring (gaging), performance testing and/or laboratory testing.

(5) Stage I corrosion. Discoloration, staining. No direct visual evidence of pitting, etching or other surface damage.

(6) Stage II corrosion. Loose rust, black or white corrosion accompanied by minor etching and pitting of surface. No scale or tight rust.

(7) Stage III corrosion. Rust, black or white corrosion accompanied singly or in combination with etching, pitting or more extensive surface damage. Loose or granular condition.

(8) Stage IV corrosion. Rust, black or white corrosion progressed to the point where fit, wear, function or life of the item has been affected. Powdered or scaly condition, with pits or irregular areas of material removed from the surface of the item.

(9) Defects and Defectives. **A defect is any non-conformance of the unit of product with specified requirements. A defective is a unit of product which contains one or more defects. The classification of defects and defectives is the listing of possible de-**

fects of the unit of product, or defectives, classified according to their seriousness.

(a) Critical. A critical defect is one that judgment and experience indicate could result in hazardous or unsafe conditions for individuals using or maintaining the product, or for major end items of units of a product, a defect that could prevent performance of their tactical functions. A critical defective is a unit of product that contains one or more critical defects.

(b) Major. A major defect is a defect, other than critical, that could result in failure, or materially reduce the usability of the unit of product for its intended purpose, or seriously affect the appearance when appearance is a major characteristic of the item. A major defective is a unit of product that contains one or more major defects.

(c) Minor. A minor defect is one that does not materially reduce the usability of the unit of product for its intended purpose, or is a departure from established standards having no significant bearing on the effective use or operation of the unit, or affects the appearance in a minor degree when appearance is a significant characteristic. A minor defective is a unit of product that contains one or more minor defects.

4. General. It is the Army's objective to attain and maintain a constant materiel readiness status of supplies and equipment in depot stocks. The scope of this objective is of such magnitude that only general guidelines are provided by Chapter 3, Section VIII, TM 743-200-1 for the quality evaluation of materiel in the custody of supply and storage activities. This standard supplements TM 743-200-1 by providing a systematic procedure for storage surveillance inspection of those items mentioned in paragraph 6 and indicates the limiting degree of deterioration, damage, unsatisfactory storage practices and other characteristics acceptable. It also establishes the basis for identifying material requiring segregation, remedial care and preservation or reclassification action. Applicable requirements of the standard may be used for performing receipt and preshipment quality control inspections.

5. Comments. Comments and suggestions pertaining to this bulletin should be submitted to the Commander, US Army Mobility Equipment Command, ATTN: AMSME-SP, 4300 Goodfellow Boulevard, St. Louis, MO 63120.

SECTION II STORAGE AND SPECIAL INSTRUCTIONS

6. Applicable Items. The provisions of this bulletin are applicable to those items listed in appendix A.

7. Preservation, Packaging and Packing. Preservation, packaging and packing will be in accordance with the packaging references cited in the Packaging Segment of the Army Master Data File (AR 708-1).

8. Marking. Marking will be in accordance with MIL-STD-129.

9. Storage. a. Type. Type of storage will be in accordance with SB 740-1.

b. Age Control. The items covered by this bulletin will be issued on a First-In-First-Out (FIFO) basis by date of manufacturer.

c. Shelf-Life. The items covered by this bulletin have an indefinite shelf-life.

10. Formation of Lots. The selection of representative samples for surveillance evaluation is based on the homogeneity of the lot. Subject to the limitations of this rule, inspection lots should be as large as possible. To encompass these principles, the formation of lots for surveillance will consist of manufacturer's lots, grand lots or mixed lots.

a. Manufacturer's Lots. The manufacturer's lot, batch or control number will be used whenever possible in the selection of samples. This would include lots of sizeable quantities in original packs.

b. Grand Lot.

(1) The grouping together of several lots of one manufacturer can effect an increase of lot size. However, the following conditions must be met by these lots before material can be considered for grouping into a grand lot:

- (a) Identical stock number, class, type, model.
- (b) Same manufacturer.
- (c) Manufactured within a period of twelve months.
- (d) Comparable storage history.
- (e) Identical packaging.
- (f) No known significant difference in quality.

(2) The grand lot may be formed when the complete analysis of all available data, including the conditions noted above and the technical judgment of the surveillance team, indicate the homogeneity of

all significant characteristics. The formation of a grand lot at a depot is only a paper transaction and does not require any rewarehousing or reworking of material. Where such grand lots are formed and sampled for surveillance, reports of results should include a complete description of the grand lot composition in each case. If the samples drawn from the grand lot indicate heterogeneity of the individual lots making up the grand lot, the grand lot will then be terminated and manufacturer's lot sampling substituted.

c. Mixed Lot. The mixed lot is formed of one or more lots whose identification by manufacturer or lot number has been lost and its relation to other lots cannot be determined. An example of this is depot rollback or repacks of preserved material. Several mixed lots may be grouped into grand lots if surveillance inspection data indicates that these mixed lots are similar in their significant characteristics.

11. Storage Quality Control. a. Sample Selection. Select samples of material in a manner that will assure each unit in the lot has an equal chance of being selected. Biased methods, such as selecting items from the same position in the container, pallets or stacks; taking items all from one location; or selecting items that appear defective, will not be utilized. The use of a table of random numbers as contained in the Department of Defense Handbook, H53, is recommended and will insure random selection of samples.

b. Inspection.

(1) Frequency.

(a) **Controlled humidity warehouse—60 months.**

(b) **Controlled temperature warehouse—30 months.**

(c) **Noncontrolled temperature warehouse 24 months.**

(d) **Shed—12 months.**

(e) **Open—6 months.**

(2) **Selection of sampling plan. The sampling plan will be obtained from the Master Sampling Table, which reflects inspection level II and has been adapted from plans provided in MIL-STD-105**

Lot size	Sampling plan			Acceptance-Rejection numbers				
	Sample No.	Sample size			Major-A		Major-B	
		Major-A	Major-B	Cumulative sample size	AC	RF	AC	RE
2-8		3	2		0	1	0	1
9-15		3	2		0	1	0	1
16-25		3	3		0	1	0	1
26-90	FIRST	8		8	0	2	0	3
	SECOND	8		16	1	2	3	4
91-150	FIRST	13		13	0	3	1	4
	SECOND	13		26	3	4	4	5
151-280	FIRST	20		20	1	4	2	5
	SECOND	20		40	4	5	6	7
281-500	FIRST	32		32	2	5	3	7
	SECOND	32		64	6	7	8	9
501-1200	FIRST	50		50	3	7	5	9
	SECOND	50		100	8	9	12	13
1201-3200	FIRST	80		80	5	9	7	11
	SECOND	80		160	12	13	18	19
3201-10000	FIRST	125		125	7	11	11	16
	SECOND	125		250	12	19	26	27

AC = Acceptance Number
RF = Rejection Number

(a) Single sampling plan. A single sample plan, corresponding to the appropriate lot size and defect classification, is used involving lots of 25 items or less. A separate sample size and pair of acceptance and rejection numbers is shown under the column headed Major-A and Major-B. The numbers under the column headed AC refer to the maximum allowable number of defective item(s) in the sample that are permissible for acceptance. Conversely, the numbers under the columns headed RE refer to the minimum number of defective item(s) in the sample required to cause rejection of the lot.

(b) Double sampling plan. A double sampling plan, corresponding to the appropriate lot size is used if a successive stage cumulative acceptance and rejection numbers are indicated. The same sample size is used to determine the acceptance for both Major-A and Major-B defectives. The interpretation of the columns headed by AC and RE is the same as that described for the single sampling plan in (a) above. If at the first sampling stage, the number of defective items found is between the two numbers indicated in the column headed by AC and RE, an additional sample must be selected to arrive at an accept or reject decision for only one particular defect class. If an additional sample is required for only one particular defect class, the inspection of the second sample will be restricted to only that particular defect class. For example, if the sampling table indicates acceptance for the Major-A defect class, but requires an additional sample to reach and accept or reject decision for Major-B defects, Major-A defectives so observed on the second sample will

not contribute to lot rejection of the Major-A defect class. When a rejection number is reached in a second stage sample, inspection will be discontinued.

(3) Inspection method. Perform technical inspection of the selected samples. Functional or performance tests should be avoided unless there are significant indications that components of the items have deteriorated to a degree that operational problems will exist.

c. Defect Classification. Refer to Appendix B and C for listings of defects and their classifications. Defects should be classified as critical (when critical defects are considered), Major-A, Major-B or Minor, even if they are not considered to belong fully in these classes at the time of the inspection, but can reasonably be expected to be in these classes prior to the next scheduled inspection period. When inspection or testing of an item reveals a critical defect, the lot represented will be rejected. Defects noted during the inspection and classified as minor will not be cause for rejection of the lot.

12. Other Instructions. a. Rejected Lots. Units comprising rejected lots will be afforded technical inspection on an individual basis to identify the degree of serviceability, condition and completeness in terms of readiness for issue or to identify actions underway to change the status of the material (AR 725-50).

b. Repackaging of Samples Inspected. Restore packaging of samples inspected and accepted to the level of the lot from which samples were drawn.

13. References. A listing of publications applicable to this bulletin is provided below.

Number	Title
AR 708-1	Cataloging and Supply Management Data
AR 725-50	Requisitioning, Receipt and Issue System
MIL-STD-105	Sampling Procedures and Tables for Inspection by Attributes
MIL-STD-129	Marking for Shipment and Storage
Tm 38-750	The Army Maintenance Management System (TAMMS)
TM 743-200-1	Storage and Materials Handling
SB 740-1	Covered and Open Storage
Handbook H53	Quality and Reliability Assurance Guide for Sampling Inspection

APPENDIX A
 APPLICABLE ITEMS

Federal stock number	Nomenclature	Federal stock number	Nomenclature
3910-056-9410	Conveyor, Belt	3930-053-9229	Truck, Lift, Fork
3910-141-7186	Conveyor, Belt	3930-053-9230	Truck, Lift, Fork
3910-141-7187	Conveyor, Belt	3930-053-9231	Truck, Lift, Fork
3910-141-7213	Conveyor, Belt	3930-1053-9232	Truck, Lift, Fork
3910-172-8712	Conveyor, Belt	3930-056-8209	Truck, Lift, Fork
3910-172-8713	Conveyor, Belt	3930-060-6793	Truck, Lift, Fork
3910-234-4918	Conveyor, Belt	3930-064-5868	Truck, Lift, Fork
3910-234-8305	Conveyor, Drag	3930-064-5871	Truck, Lift, Fork
3910-234-8308	Conveyor, Drag	3930-064-6563	Tractor, Wheeled, Warehouse
3910-240-7610	Conveyor, Drag	3930-064-6564	Truck, Lift, Fork
3910-242-2588	Conveyor, Belt	3930-069-9035	Truck, Lift, Fork
3910-271-1888	Conveyor, Belt	3930-069-9040	Truck, Lift, Fork
3910-271-1889	Conveyor, Belt	3930-072-0371	Truck, Lift, Fork
3910-290-4824	Conveyor, Belt	3930-073-8676	Truck, Lift, Fork
3910-298-7054	Conveyor, Belt	3930-073-8750	Truck, Lift, Fork
3910-298-7088	Conveyor, Belt	3930-073-9222	Truck, Lift, Fork
3910-298-7176	Conveyor, Belt	3930-077-0542	Truck, Lift, Fork
391-298-9624	Conveyor, Belt	5930-077-0549	Truck, Lift, Fork
3910-298-9625	Conveyor, Belt	3930-086-6677	Truck, Lift, Fork
3910-298-9626	Conveyor, Belt	3930-089-4448	Truck, Lift, Fork
3910-298-9627	Conveyor, Belt	3930-090-0868	Tractor, Wheeled, Warehouse
3910-298-9628	Conveyor, Belt	3930-118-7023	Truck, Lift, Fork
3910-298-9629	Conveyor, Belt	3930-151-4428	Truck, Lift, Fork
3910-298-9630	Conveyor, Belt	3930-0151-4432	Truck, Lift, Fork
3910-298-9632	Conveyor, Belt	3930-0151-4434	Truck, Lift, Fork
3910-407-0405	Conveyor, Belt	3930-0165-4102	Truck, Lift, Fork
3910-514-6263	Conveyor, Belt	3930-165-4138	Truck, Lift, Fork
3910-515-4135	Conveyor, Belt	3930-1721-8714	Truck, Lift, Fork
3910-790-2175	Conveyor, Belt	3930-179-1147	Truck, Straddle, Carry
3910817-9170	Conveyor, Belt	3930-181-3217	Tractor, Wheeled, Warehouse
3910-832-5233	Conveyor, Belt	3930-186-3482	Truck, Stock Selector
3910-832-5234	Conveyor, Belt	3930-214-1024	Truck, Lift, Fork
3920-408-1211	Semitrailer, Straddle	3930-214-1027	Tractor, Wheeled, Warehouse
3920419-5742	Semitrailer, Straddle	3930-223-0599	Truck, Lift, Fork
3930-017-9079	Truck, Lift, Fork	3930-223-0602	Truck, Lift, Fork
3930-017-9280	Truck, Powered	3930-223-0603	Truck, Lift, Fork
3930-025-1015	Truck, Lift, Fork	3930-223-0604	Truck, Lift, Fork
3930-035-6728	Truck, Straddle Carry	3930-223-0613	Truck, Lift, Fork
3930-035-6731	Truck, Straddle Carry	3930-223-0617	Truck, Lift, Fork
3930-038-3162	Truck, Lift, Fork	3930-223-0618	Truck, Lift, Fork
3930-038-3163	Truck, Lift, Fork	3930-223-0624	Truck, Lift, Fork
3930-038-3164	Tractor, Wheeled, Warehouse	3930-223-0627	Truck, Lift, Fork
3930-038-3165	Tractor, Wheeled, Warehouse	3930-223-0631	Truck, Lift, Fork
3930-038-3166	Tractor, Wheeled, Warehouse	3930-223-6531	Truck, Straddle, Carry
3930-038-4410	Truck, Lift, Fork	3930-224-8685	Truck, Lift, Fork
3930-038-4411	Truck, Lift, Fork	3930-230-9948	Tractor, Wheeled, Warehouse
3930-038-4412	Truck, Lift, Fork	3930-230-9949	Tractor, Wheeled, Warehouse
3930-052-0034	Truck, Straddle, Carry	3930-230-9950	Tractor, Wheeled, Warehouse
3930-053-9166	Truck, Lift, Fork	3930-235-4674	Truck, Lift, Fork
3930-053-9176	Truck, Lift, Fork	3930-236-6253	Truck, Lift, Fork
3930-053-9192	Truck, Lift, Fork	3930-240-8292	Truck, Lift, Fork
3938053-9196	Truck, Lift, Fork	3930-240-8295	Truck, Lift, Fork

Federal stock number	Nomenclature	Federal stock number	Nomenclature
3930-240-8296	Truck, Lift, Fork	3930-351-9946	Truck, Lift, Fork
3930-242-3032	Truck, Lift, Fork	3930-351-9950	Truck, Straddle, Carry
3930-242-3033	Truck, Lift, Fork	3930-403-5661	Truck, Lift, Fork
3930-242-3035	Truck, Lift, Fork	3930-403-5662	Truck, Lift, Fork
3930-243-5372	Truck, Lift, Fork	3930-419-5738	Truck, Lift, Fork
3930-253-5492	Truck, Stock Selector	3930-419-5744	Truck, Lift, Fork
3930-257-4863	Truck, Lift, Fork	3930-436-1411	Truck, Lift, Fork
3930-257-4864	Truck, Lift, Fork	3930-436-1413	Truck, Lift, Fork
3930-257-4865	Truck, Lift, Fork	3930-449-0433	Truck, Lift, Fork
3930-257-4868	Truck, Lift, Fork	3930-459-5948	Truck, Lift, Fork
3930-265-6851	Tractor, Wheeled, Warehouse	3930-465-5869	Truck, Lift, Fork
3930-265-6853	Tractor, Wheeled, Warehouse	3930-470-1288	Truck, Lift, Fork
3930-265-6854	Tractor, Wheeled, Warehouse	3930-474-0546	Truck, Lift, Fork
3930-265-6860	Tractor, Wheeled, Warehouse	3930-479-8769	Truck, Lift, Fork
3930-265-6865	Tractor, Wheeled, Warehouse	3930-489-0263	Truck, Lift, Fork
3930-266-8955	Truck, Lift, Fork	3930-494-8151	Truck, Lift, Fork
3930-266-8956	Truck, Lift, Fork	3930-514-3477	Truck, Lift, Fork
3930-266-8963	Truck, Lift, Fork	3930-527-9111	Truck, Lift, Fork
3930-266-8964	Truck, Lift, Fork	3930-530-2569	Truck, Lift, Fork
3930-266-8965	Truck, Lift, Fork	3930-531-3708	Truck, Lift, Fork
3930-266-8966	Truck, Lift, Fork	3930-531-6023	Truck, Lift, Fork
3930-266-8967	Truck, Lift, Fork	3938531-6031	Truck, Lift, Fork
3930-271-1449	Truck, Lift, Fork	3930541-1960	Truck, Lift, Fork
3930-271-1833	Truck, Lift, Fork	3930-542-2175	Truck, Lift, Fork
3930-271-1834	Truck, Lift, Fork	3930-554-1985	Truck, Lift, Fork
3930-271-1835	Truck, Lift, Fork	3930-554-2318	Truck, Lift, Fork
3930-271-1836	Truck, Lift, Fork	3930-554-2599	Truck, Lift, Fork
3930-271-1845	Tractor, Wheeled, Warehouse	3936554-2700	Truck, Lift, Fork
3930-271-1891	Truck, Lift, Fork	3930-554-4354	Truck, Lift, Fork
3930-271-1893	Truck, Lift, Fork	3930-554-4428	Truck, Lift, Fork
3930-271-1894	Truck, Lift, Fork	3930-554-4592	Truck, Lift, Fork
3930-271-1899	Truck, Lift, Fork	3930-554-5183	Truck, Lift, Fork
3930-271-1900	Truck, Lift, Fork	3930-454-5192	Truck, Lift, Fork
3930-271-1901	Truck, Lift, Fork	3930-555-6290	Truck, Lift, Fork
3930-271-1902	Truck, Lift, Fork	3930-599-7512	Truck, Lift, Fork
3930-272-9972	Truck, Lift, Fork	3930-621-7413	Truck, Lift, Fork
3930-273-2968	Truck, Lift, Fork	3930-641-6541	Truck, Lift, Fork
3930-273-8203	Truck, Lift, Fork	3930-678-2579	Truck, Lift, Fork
3930-273-8204	Truck, Lift, Fork	3930-678-2580	Truck, Lift, Fork
3930-273-8205	Truck, Lift, Fork	3930-678-9056	Truck, Lift, Fork
3930-273-8206	Truck, Lift, Fork	3930-678-9913	Truck, Lift, Fork
3930-273-8217	Truck, Lift, Fork	3930-678-9914	Tractor, Wheeled, Warehouse
3930-273-8218	Truck, Lift, Fork	3930-678-9915	Truck, Lift, Fork
3930-273-8219	Truck, Lift, Fork	3930-678-9917	Truck, Lift, Fork
3930-273-8220	Truck, Lift, Fork	3930-679-4457	Truck, Lift, Fork
3930-273-8221	Truck, Lift, Fork	3930-679-4458	Truck, Lift, Fork
3930-273-8222	Truck, Lift, Fork	3930-691-3330	Truck, Lift, Fork
3930-273-8223	Truck, Lift, Fork	3930-709-6342	Truck, Lift, Fork
3930-273-8226	Truck, Lift, Fork	3930-709-6358	Truck, Lift, Fork
3930-273-8227	Truck, Lift, Fork	3930-724-3568	Truck, Lift, Fork
3930-273-8228	Truck, Lift, Fork	3930-724-3570	Truck, Lift, Fork
3930-273-8229	Truck, Lift, Fork	3930-724-4057	Truck, Lift, Fork
3930-290-1070	Truck, Lift, Fork	3930-724-4058	Truck, Lift, Fork
3930-292-1098	Truck, Lift, Fork	3930-724-4059	Truck, Lift, Fork
3930-192-1100	Truck, Lift, Fork	3930-724-8145	Tractor, Wheeled, Warehouse
3930-298-5327	Truck, Lift, Fork	3930-724-8146	Tractor, Wheeled, Warehouse
3930-351-9917	Tractor, Wheeled, Warehouse	3930-738-5938	Truck, Lift, Fork
3930-351-9918	Tractor, Wheeled, Warehouse	3930-738-6030	Truck, Lift, Fork
3930-351-9919	Tractor, Wheeled, Warehouse	3930-781-3855	Truck, Lift, Fork
3930-351-9920	Tractor, Wheeled, Warehouse	3930-781-3856	Truck, Lift, Fork

APPENDIX B
 PRESERVATION, PACKAGING, PACKING AND MARKING DEFECTS

Item	Defect	Classification		
		Major		Minor
		A	B	
<i>PRESERVATION AND PACKAGING</i>	Inadequate or deteriorated to such an extent it will not provide protection against deterioration or damage during storage . . .		X	
<i>MARKING</i>	Incorrect marking and/or lack of identification or required special marking Improper sequence or location of marking, incorrect method of marking used, improper size of marking applied	X		X
<i>PACKING</i>	Inadequate to the extent it will not provide protection against damage or loss		X	

APPENDIX C
ITEM DEFECTS

Individual item defects listings for each type of equipment covered by this bulletin are provided herein (Ap GA through **C-E**).

Appendix C-A---Conveyors.

Appendix C-B- Straddle Carry (Truck and Trailers)

Appendix C-C-Trucks, Lift, Fork

Appendix C-D-Tractors, Warehouse

Appendix C-E-Crane Trucks, Warehouse

APPENDIX C-A
ITEM DEFECTS FOR CONVEYORS

Item	Defect	Classification		
		Major		Minor
		A	B	
ENGINE ASSEMBLY				
Valves, rocker arm assembly and combustion chambers	Stage II corrosion	X		
	Stage I corrosion		X	
Piston assembly and cylinder walls	Stage II corrosion	X		
	Stage I corrosion		X	
Flywheel and ring gear	Stage IV corrosion, ring gear chipped, cracked or broken.	X		
	Stage III corrosion		X	
Air Cleaner	Stage II corrosion	X		X
	Stage IV corrosion			
	Stage III corrosion		X	
Cooling System Radiator	Stage II corrosion			X
	Stage IV corrosion on internal surfaces, leaks	X		
Shutter and controls	Stage III corrosion on internal surfaces, collant contaminated		X	
	Stage II corrosion on internal surfaces			X
	Stage IV corrosion	X		
Fan	Frozen, stage III corrosion		X	
	Stage II corrosion			X
Cooling fins	Blades broken, stage IV corrosion	X		
	Bent, stage III corrosion		X	
Seals and gaskets	Stage II corrosion			X
	Bent or otherwise damaged to the extent repair is required		X	
Hoses and belts	Deteriorated, leaks or seeps	X		
	Checking or cracking, frayed or cut, loss of flexibility; fungus growth, broken reinforcing		X	
Pulleys	Cracked, broken, stage IV corrosion.	X		
	Stage III corrosion.		X	
Water pump	Stage II corrosion			X
	Stage IV corrosion on internal surfaces, frozen, leaks	X		
	Stage III corrosion on internal surfaces		X	
Fuel system Tanks	Stage II corrosion on internal surfaces			X
	Stage III corrosion.	X		
External surfaces	Stage II corrosion		X	
	Stage IV corrosion	X		
	Stage III corrosion.		X	
Lines, hoses, and connectors	Stage II corrosion			X
	Cracked or checked, kinked, broken; fungus growth	X		
Filters, and sediment bowls	Stage IV corrosion on internal surfaces, cracked or broken	X		
	Stage III corrosion on internal surfaces; element deteriorated or contaminated		X	
	Stage II corrosion on internal surfaces			X
Carburator, injectors or nozzles	Stage III corrosion, cracked or broken	X		
	Stage II corrosion, contaminated		X	
Seals	Deteriorated, leaks or seeps.	X		
Exhaust system. Rain cap	Stage IV corrosion, cracked, broken or missing	X		
	Stage III corrosion.		X	
Brackets and hangers	Stage II corrosion			X
	Stage IV corrosion, cracked, or broken	X		
	Stage III corrosion.		X	
Intake and exhaust manifolds, muffler and pipes	Stage II corrosion			X
	Stage IV corrosion, punctured	X		
	Stage III corrosion.		X	
ELECTRICAL SYSTEM: Wiring	Stage II corrosion			X
	Broken strands, cracked insulation, fungus growth	X		
	Frayed; checked, loss of flexibility		X	

Item	Defect	Classification		
		Major		Minor
		A	B	
Terminals and connections	Stage III corrosion; broken terminals	X		
Spark plugs	Stage II corrosion		X	
	Stage III corrosion on spark point end; ceramic insulator broken . .		X	
Switches, regulators, relays, magnetos and controllers	Stage II corrosion on spark point end			X
Generator assemblies, electric motors and starters	Stage III corrosion, broken, frozen	X		
Lights and reflectors	Stage II corrosion		X	
	Stage III corrosion, frozen	X		
	Stage II corrosion		X	
	Stage III corrosion, cracked or broken		X	
	Stage II corrosion			X
LUBRICATION SYSTEM				
Lines, hoses and fittings	Kinked, broken, leaks or seeps, checked or cracked, fungus growth.	X		
Filters	Stage III corrosion on internal or external surfaces	X		
	Stage II corrosion on internal surfaces, element deteriorated or contaminated			
Lubricant	Contaminated		X	
Seals	Deteriorated, leaks or seeps	X	X	
CONTROLS AND INSTRUMENTS				
	Stage III corrosion, cracked or broken, inoperable, dial face illegible	X		
	Stage II corrosion, linkage frozen		X	
BASIC ISSUE ITEMS (BII)				
	Missing	X		
	Deteriorated or damaged		X	
COMPONENTS AND ACCESSORIES				
	Missing, incomplete	X		
	Deteriorated or damaged		X	
DRIVE BELTS AND HOSES				
	Checking, cracking, broken reinforcing, frayed, cut, loss of flexibility and resiliency, fungus growth		X	
GEARS				
Exposed	Chipped, cracked or broken, stage IV corrosion	X		
	Stage III corrosion		X	
	Stage II corrosion			X
Enclosed	Chipped, cracked or broken, stage III corrosion	X		
	Stage II corrosion, lubricant contaminated		X	
PULLEYS AND DRIVE SPROCKETS				
	Cracked or broken, stage IV corrosion	X		
	Stage III corrosion		X	
	Stage II corrosion			X
EXTERIOR SURFACES AND HOUSINGS				
General	Fractures, base mounting and/or fastening devices broken or missing	X		
	Dents		X	
Painted Surfaces	Stage III corrosion, chipped or abraded.	X		
	Stage II corrosion		X	
Unpainted noncritical surfaces	Stage IV corrosion.	X		
	Stage III corrosion.		X	
	Stage II corrosion			X
LIFTING AND/OR TIE DOWN DEVICES				
	Cracked, broken or distorted		X	
WARNING OR CAUTION PLATES				
	Illegible, missing	X		
MODIFICATION WORK ORDER (MWO)				
Urgent classification	Not applied.	X		
Routine classification	Not applied.			
EQUIPMENT LOG BOOK (TM 38-750)				
	Missing	X		
	Incomplete		X	
HYDRAULIC SYSTEM				
Lines, hoses and fittings	Kinked, broken, leaks or seeps; checked or cracked; fungus growth, loss of flexibility	X		
Pump and/or fluid reservoir	Body cracked or broken, stage III corrosion	X		
	Stage II corrosion on internal surfaces			
Cylinders and valves	Stage III corrosion.		X	
	Stage II corrosion on rods and/or internal surfaces of cylinders and valves	X		
Operating fluid	Contaminated		X	

Item	Defect	Classification		
		Major		Minor
		A	B	
Gaskets and seals Filters	Deteriorated, leaks or seeps Stage III corrosion on internal surfaces Stage II corrosion on internal surfaces, element contaminated	X X		
CLUTCH ASSEMBLY				
Bearings, shafts, linkage and springs.	Stage III corrosion, frozen Stage II corrosion	X		
Metal disks and plates	Stage III corrosion Stage II corrosion	X	X	
Fiber disks and bands	Deteriorated, punctured or torn	X	X	
Lubricant	Contaminated		X	
BRAKE ASSEMBLY				
Drum and/or shoes	Stage IV corrosion Stage III corrosion Stage II corrosion	X	X	X
Springs, anchors, cable, yokes and/or linkage	Stage IV corrosion, distorted or broken Stage III corrosion, frozen Stage II corrosion	X	X	X
Fluid reservoirs, wheel and master cylinders	Stage III corrosion on internal surfaces, stage IV corrosion on external surfaces, leaks, boots deteriorated, frozen Stage III corrosion on external surfaces, stage II corrosion on internal surfaces	X		
Air compressor and air reservoir	Stage III corrosion on internal surfaces, stage IV corrosion on external surfaces. Stage II corrosion on internal surfaces, stage III corrosion on external surfaces	X	X	
Cylinder actuating rods	Stage IV corrosion Stage III corrosion Stage II corrosion	X	X	X
Lines, hoses and fittings	Checked, cracked, kinked; split or cut; leaks, loss of flexibility			X
GOVERNORS	Stage IV corrosion, linkage broken Stage III corrosion, linkage frozen Stage II corrosion	X	X	X
POWER TRAIN				
Transmission (standard)	Stage III corrosion on internal surfaces, seals deteriorated; leaks Stage II corrosion on internal surfaces, contaminated lubricant	X	X	
Final drive	Stage III corrosion on shafts, pinion, bearings or gears; deteriorated seals, leaks Stage II corrosion on shafts, pinion, bearings or gears, lubricant contaminated.	X	X	
Reduction drive	Stage III corrosion on shafts, case, gears, bearings or chains; deteriorated seals, leaks Stage II corrosion on shafts, gears, bearings or chains; lubricant contaminated	X	X	
Differential	Stage III corrosion on housing, gears, shafts, bearings or pinion deteriorated seals; leaks Stage II corrosion on gears, shafts, bearings or pinion, lubricant contaminated	X	X	
Transfer case	Stage III corrosion on internal surfaces; deteriorated seals, leaks Stage I corrosion on internal surfaces; lubricant contaminated	X	X	
DRIVE CHAINS:				
Precision	Stage III corrosion; cracked or broken links Stage II corrosion; pins and/or rollers frozen	X	X	
Non-precision	Stage IV corrosion; cracked or broken links Stage III corrosion; pins and/or rollers frozen Stage II corrosion	X	X	X
CHASSIS				
Frame and springs	Cracked or broken welds; stage IV corrosion Stage III corrosion Stage II corrosion	X	X	X
Tires	Checks and cracks extending to the cord, cut or punctured, bulges indicating ply separation, chunking of rubber	X		

Item	Defect	Classification		
		Major		Minor
		A	B	
Wheels	Distorted; broken; stage IV corrosion	x		
	Stage III corrosion		x	
	Stage II corrosion			x
TRACKS				
STEERING SYSTEM:				
Actuating cylinders	Stage IV corrosion; shaft bent or distorted; seals leaking	x		
	Stage III corrosion on shafts		x	
	Stage II corrosion on shafts			x
Linkage	Stage IV corrosion, bent or distorted	x		
	Stage III corrosion; frozen		x	
Gear case	Stage II corrosion			x
	Stage IV corrosion on internal surfaces; deteriorated seals; leaks	x		
Fluid reservoir	Stage III corrosion on internal surfaces		x	
	Stage II corrosion on internal surfaces			x
	Stage III corrosion on internal surfaces, stage IV corrosion on external surfaces; leaks	x		
	Stage II corrosion on internal surfaces, fluid contaminated		x	

APPENDIX C-B
ITEM DEFECTS FOR STRADDLE-CARRY TRUCK & TRAILER

Item	Defect	Classification		
		Major		Minor
		A	B	
ENGINE ASSEMBLY:				
Valves, rocker arm assembly and combustion chambers	Stage II corrosion	X		
	Stage I corrosion		X	
Piston assembly and cylinder walls	Stage II corrosion	X		
	Stage I corrosion		X	
Flywheel and ring gear	Stage IV corrosion; ring gear chipped, cracked or broken.	X		
	Stage III corrosion		X	
Air cleaner	Stage II corrosion			X
	Stage IV corrosion	X		
	Stage III corrosion		X	
	Stage II corrosion			X
Cooling system.				
Radiator	Stage IV corrosion on internal surfaces; leaks	X		
	Stage III corrosion on internal surfaces; coolant contaminated		X	
	Stage II corrosion on internal surfaces			X
Shutters and controls	Stage IV corrosion	X		
	Frozen; stage III corrosion		X	
	Stage II corrosion			X
Fan	Blades broken, stage IV corrosion	X		
	Bent; stage III corrosion		X	
	Stage II corrosion			X
Cooling fins	Bent or otherwise damaged to the extent repair is required		X	
Seals and gaskets	Deteriorated; leaks or seeps	X		
Hoses and belts	Checking or cracking, frayed or cut, loss of flexibility, fungus growth; broken reinforcing		X	
Pulleys	Cracked; broken, stage IV corrosion	X		
	Stage III corrosion		X	
	Stage II corrosion			X
Water pump	Stage IV corrosion on internal surfaces, frozen, leaks	X		
	Stage III corrosion on internal surfaces		X	
	Stage II corrosion on internal surfaces			X
Fuel system				
Tanks				
Internal surfaces	Stage III corrosion	X		
	Stage II corrosion, coating peeling or flaking		X	
External surfaces	Stage IV corrosion	X		
	Stage III corrosion		X	
	Stage II corrosion			X
Lines, hoses and connectors	Cracked or checked, kinked, broken, fungus growth	X		
Filters and sediment bowls	Stage IV corrosion on internal surfaces, cracked or broken	X		
	Stage III corrosion on internal surfaces, element deteriorated or contaminated		X	
	Stage II corrosion on internal surfaces			X
Carburetor, injectors or nozzles	Stage III corrosion, cracked or broken	X		
	Stage II corrosion, contaminated		X	
Seals	Deteriorated, leaks or seeps	X		
Exhaust system				
Rain cap	Stage IV corrosion, cracked, broken or missing	X		
	Stage III corrosion		X	
	Stage II corrosion			X
Brackets and hangers	Stage IV corrosion, cracked or broken	X		
	Stage III corrosion		X	
	Stage II corrosion			X
Intake and exhaust manifolds, muffler and pipes				
	Stage IV corrosion, punctured	X		
	Stage III corrosion		X	
	Stage II corrosion			X
ELECTRICAL SYSTEM				
Wiring	Broken strands, cracked insulation, fungus growth	X		
	Frayed, checked, loss of flexibility		X	

Item	Defect	Classification		
		Major		Minor
		A	B	
Terminals and connections	Stage III corrosion; broken terminals	X		
Spark plugs	Stage II corrosion		X	
	Stage III corrosion on spark point end; ceramic insulator broken		X	
	Stage II corrosion on spark point end			X
Switches, regulators, relays, magnetos and controllers	Stage III corrosion; broken; frozen	X		
	Stage II corrosion		X	
Generator assemblies, electric motors and starters	Stage III corrosion; frozen	X		
	Stage II corrosion		X	
Lights and reflectors	Stage III corrosion; cracked or broken		X	
	Stage II corrosion			X
LUBRICATION SYSTEM:				
Lines, hoses and fittings	Kinked; broken; leaks or seeps; checked or cracked; fungus growth	X		
	Stage III corrosion on internal or external surfaces	X		
	Stage II corrosion on internal surfaces; element deteriorated or contaminated			X
Lubricant	Contaminated		X	
	Seals	Deteriorated; leaks or seeps	X	
CONTROLS AND INSTRUMENTS				
	Stage III corrosion, cracked or broken, inoperable, dial face illegible	X		
	Stage II corrosion, linkage frozen		X	
BASIC ISSUE ITEMS (BII)				
	Missing	X		
	Deteriorated or damaged		X	
COMPONENTS AND ACCESSORIES				
	Missing, incomplete	X		
	Deteriorated or damaged		X	
DRIVE BELTS AND HOSES				
	Checking, cracking; broken reinforcing, frayed, cut; loss of flexibility and resiliency, fungus growth		X	
GEARS				
Exposed	Chipped, cracked or broken, stage IV corrosion	X		
	Stage III corrosion		X	
	Stage II corrosion			X
Enclosed	Chipped, cracked or broken, stage III corrosion	X		
	Stage II corrosion, lubricant contaminated		X	
PULLEYS AND DRIVE SPROCKETS				
	Cracked or broken, stage IV corrosion	X		
	Stage III corrosion		X	
	Stage II corrosion			X
EXTERIOR SURFACES AND HOUSINGS				
General	Fractures, base mounting and/or fastening devices broken or missing	X		
	Dents		X	
Painted surfaces	Stage III corrosion, chipped or abraded	X		
	Stage II corrosion		X	
Unpainted noncritical surfaces	Stage IV corrosion	X		
	Stage III corrosion		X	
	Stage II corrosion			X
LIFTING AND/OR TIE DOWN DEVICES				
	Cracked, broken or distorted		X	
WARNING OR CAUTION PLATES				
	Illegible, missing	X		
MODIFICATION WORK ORDER (MWO)				
Urgent classification	Not applied	X		
	Routine classification		X	
EQUIPMENT LOG BOOK (YM 38-750)				
	Missing	X		
	Incomplete.		X	
HYDRAULIC SYSTEM				
Lines, hoses and fittings	Kinked, broken, leaks or seeps; checked or cracked, fungus growth, loss of flexibility	X		
	Pump and/or fluid reservoir	Body cracked or broken, stage III corrosion	X	
Cylinders and valves	Stage II corrosion on internal surfaces		X	
	Stage III corrosion	X		
	Stage II corrosion on rods and/or internal surfaces of cylinders and valves		X	
Operating fluid	Contaminated		X	
			X	

Item	Defect	Classification		
		Major		Minor
		A	B	
Gaskets and seals	Deteriorated; leaks or seeps	x		
Filters	Stage III corrosion on internal surfaces	x		
	Stage II corrosion on internal surfaces; element contaminated . . .		x	
CLUTCH ASSEMBLY:				
Bearings, shafts, linkage and springs	Stage III corrosion; frozen	x		
	Stage II corrosion		x	
Metal disks and plates	Stage III corrosion	x		
	Stage II corrosion		x	
Fiber disks and bands	Deteriorated; punctured or torn	x		
Lubricant	Contaminated		x	
BRAKE ASSEMBLY:				
Drum and/or shoes	Stage IV corrosion	x		
	Stage III corrosion		x	
	Stage II corrosion			x
Springs, anchors, cable, yokes and/or linkage	Stage IV corrosion, distorted or broken	x		
	Stage III corrosion, frozen		x	
	Stage II corrosion			x
Fluid reservoirs, wheel and master cylinders	Stage III corrosion on internal surfaces, stage IV corrosion on external surfaces; leaks, boots deteriorated, frozen	x		
	Stage III corrosion on external surfaces, stage II corrosion on internal surfaces		x	
Air compressor and air reservoir	Stage III corrosion on internal surfaces, stage IV corrosion on external surfaces.	x		
	Stage II corrosion on internal surfaces, stage III corrosion on external surfaces.		x	
Cylinder actuating rods	Stage IV corrosion.	x		
	Stage III corrosion.		x	
	Stage II corrosion			x
Lines, hoses and fittings	Checked, cracked, kinked, split or cut, leaks, loss of flexibility . . .	x		
GOVERNORS				
	Stage IV corrosion, linkage broken	x		
	Stage III corrosion, linkage frozen		x	
	Stage II corrosion			x
POWER TRAIN				
Transmission (standard)	Stage III corrosion on internal surfaces, seals deteriorated, leaks . .	x		
	Stage II corrosion on internal surfaces, contaminated lubricant . . .		x	
Final drive	Stage III corrosion on shafts, pinion, bearings or gears, deteriorated seals, leaks	x		
	Stage II corrosion on shafts, pinion, bearings or gears, lubricant contaminated.		x	
Reduction drive	Stage III corrosion on shafts, case, gears, bearings or chains; deteriorated seals, leaks	x		
	Stage II corrosion on shafts, gears, bearings or chains, lubricant contaminated.		x	
Differential	Stage III corrosion on housing, gears, shafts, bearings or pinion, deteriorated seals, leaks	x		
	Stage II corrosion on gears, shafts, bearings or pinion; lubricant contaminated.		x	
Transfer case	Stage III corrosion on internal surfaces, deteriorated seals, leaks . .	x		
	Stage II corrosion on internal surfaces, lubricant contaminated . . .		x	
DRIVE CHAINS				
Precision	Stage III corrosion, cracked or broken links	x		
	Stage II corrosion; pins and/or rollers frozen		x	
Non-precision	Stage IV corrosion, cracked or broken links	x		
	Stage III corrosion, pins and/or rollers frozen		x	
	Stage II corrosion			x
CHASSIS				
Frame and springs	Cracked or broken welds; stage IV corrosion	x		
	Stage III corrosion		x	
	Stage II corrosion			x

Item	Defect	Classification		
		Major		Minor
		A	B	
Tires	Checks and cracks extending to the cord; cut or punctured; bulges indicating ply separation; chunking of rubber	X		
Wheels	Distorted; broken; stage IV corrosion	X		
	Stage III corrosion		X	
	Stage II corrosion			X
STEERING SYSTEM:				
Actuating cylinders	Stage IV corrosion; shaft bent or distorted; seals leaking	X		
	Stage III corrosion on shafts		X	
	Stage II corrosion on shafts			X
Linkage	Stage IV corrosion; bent or distorted	X		
	Stage III corrosion; frozen		X	
	Stage II corrosion			X
Gear case	Stage IV corrosion on internal surfaces; deteriorated seals; leaks . .	X		
	Stage III corrosion on internal surfaces		X	
	Stage II corrosion on internal surfaces			X
Fluid reservoir	Stage III corrosion on internal surfaces, stage IV corrosion on external surfaces; leaks	X		
	Stage II corrosion on internal surfaces, fluid contaminated.		X	
CAB.				
Glass	Broken or cracked	X		
Hinges and latches	Broken, stage IV corrosion	X		
	Stage III corrosion, frozen		X	
	Stage II corrosion			X
Mirrors	Glass broken or cracked, stage III corrosion		X	
	Stage II corrosion			X
Wiper blades and arms	Rubber hardened, checked, cracked or torn, fungus growth, stage III corrosion		X	
	Stage II corrosion			X
Upholstering and cushions	Punctured to torn, mildew or fungus growth, insect infested.		X	
Canvas Tops and curtains	Tears, cuts, mildew or mold		X	
Seat adjusters	Stage III corrosion		X	
	Stage II corrosion			X
LOAD HOOK ASSEMBLY.				
Shifter Shaft	Distorted, Stage IV corrosion	X		
	Stage III corrosion		X	
	Stage II corrosion			X
Hook Swing Rack	Distorted; Stage IV corrosion	X		
	Stage III corrosion		X	
	Stage II corrosion			X

APPENDIX C-C
ITEM DEFECTS FOR TRUCKS, LIFT, FORK

SB 740-97-3900

Item	Defect	Classification		
		Major		Minor
		A	B	
ENGINE ASSEMBLY:				
Valves, rocker arm assembly and combustion chambers	Stage II corrosion	X		
	Stage I corrosion		X	
Piston assembly and cylinder walls	Stage II corrosion	X		
	Stage I corrosion		X	
Flywheel and ring gear	Stage IV corrosion; ring gear chipped, cracked or broken	X		
	Stage III corrosion		X	
Air cleaner	Stage II corrosion			X
	Stage IV corrosion	X		
	Stage III corrosion		X	
	Stage II corrosion			X
Cooling system:				
Radiator	Stage IV corrosion on internal surfaces; leaks	X		
	Stage III corrosion on internal surfaces, coolant contaminated		X	
	Stage II corrosion on internal surfaces			X
Shutters and controls	Stage IV corrosion	X		
	Frozen; stage III corrosion		X	
	Stage II corrosion			X
Fan	Blades broken; stage IV corrosion	X		
	Bent, stage III corrosion		X	
	Stage II corrosion			X
Cooling fins	Bent or otherwise damaged to the extent repair is required		X	
Seals and gaskets	Deteriorated, leaks or seeps	X		
Hoses and belts	Checking or cracking, frayed or cut, loss of flexibility, fungus growth, broken reinforcing		X	
Pulleys	Cracked, broken, stage IV corrosion	X		
	Stage III corrosion		X	
	Stage II corrosion			X
Water pump	Stage IV corrosion on internal surfaces, frozen, leaks	X		
	Stage III corrosion on internal surfaces		X	
	Stage II corrosion on internal surfaces			X
Fuel system				
Tanks				
Internal surfaces	Stage III corrosion	X		
	Stage II corrosion, coating peeling or flaking		X	
External surfaces	Stage IV corrosion	X		
	Stage III corrosion		X	
	Stage II corrosion			X
Lines, hoses and connectors	Cracked or checked, kinked, broken, fungus growth	X		
Filters and sediment bowls	Stage IV corrosion on internal surfaces; cracked or broken	X		
	Stage III corrosion on internal surfaces; element deteriorated or contaminated		X	
	Stage II corrosion on internal surfaces			X
Carburetor, injectors or nozzles	Stage III corrosion, cracked or broken	X		
	Stage II corrosion, contaminated		X	
Seals	Deteriorated, leaks or seeps	X		
Exhaust system				
Rain cap	Stage IV corrosion, cracked, broken or missing	X		
	Stage III corrosion		X	
	Stage II corrosion			X
Brackets and hangers	Stage IV corrosion; cracked or broken	X		
	Stage III corrosion		X	
	Stage II corrosion			X
Intake and exhaust manifolds, muffler and pipes				
	Stage IV corrosion; punctured	X		
	Stage III corrosion		X	
	Stage II corrosion			X
ELECTRICAL SYSTEM				
Wiring	Broken strands, cracked insulation; fungus growth	X		
	Frayed; checked; loss of flexibility		X	

Item	Defect	Classification		
		Major		Minor
		A	B	
Terminals and connections	Stage III corrosion; broken terminals	X		
	Stage II corrosion		X	
Spark plugs	Stage III corrosion on spark point end; ceramic insulator broken		X	
	Stage II corrosion on spark point end			X
Switches, regulators, relays, magnetos and controllers	Stage III corrosion; broken; frozen	X		
	Stage II corrosion		X	
Generator assemblies, electric motors and starters	Stage III corrosion; frozen	X		
	Stage II corrosion		X	
Lights and reflectors	Stage III corrosion; cracked or broken		X	
	Stage II corrosion			X
LUBRICATION SYSTEM:				
Lines, hoses and fittings	Kinked; broken; leaks or seeps; checked or cracked; fungus growth.	X		
Filters	Stage III corrosion on internal or external surfaces	X		
	Stage II corrosion on internal surfaces; element deteriorated or contaminated.		X	
Lubricant	Contaminated		X	
Seals	Deteriorated, leaks or seeps.	X		
CONTROLS AND INSTRUMENTS:				
	Stage III corrosion; cracked or broken; inoperable; dial face illegible.	X		
	Stage II corrosion; linkage frozen		X	
BASIC ISSUE ITEMS (BII)				
	Missing	X		
	Deteriorated or damaged		X	
COMPONENTS AND ACCESSORIES				
	Missing, incomplete	X		
	Deteriorated or damaged		X	
DRIVE BELTS AND HOSES				
	Checking; cracking, broken reinforcing, frayed; cut; loss of flexibility and resiliency; fungus growth		X	
GEARS				
Exposed	Chipped, cracked or broken; stage IV corrosion	X		
	Stage III corrosion.		X	
	Stage II corrosion			X
Enclosed	Chipped, cracked or broken, stage III corrosion	X		
	Stage II corrosion, lubricant contaminated		X	
PULLEYS AND DRIVE SPROCKETS				
	Cracked or broken, stage IV corrosion	X		
	Stage III corrosion.		X	
	Stage II corrosion			X
EXTERIOR SURFACES AND HOUSINGS				
General	Fractures, base mounting and/or fastening devices broken or missing	X		
	Dents		X	
Painted surfaces	Stage III corrosion, chipped or abraded.	X		
	Stage II corrosion		X	
Unpainted noncritical surfaces	Stage IV corrosion.	X		
	Stage III corrosion.		X	
	Stage II corrosion			X
LIFTING AND/OR TIE DOWN DEVICES				
	Cracked, broken or distorted.		X	
WARNING OR CAUTION PLATES				
	Illegible, missing	X		
MODIFICATION WORK ORDER (MWO)				
Urgent classification	Not applied.	X		
Routine classification	Not applied.		X	
EQUIPMENT LOG BOOK (TM 38-750)				
	Missing	X		
	Incomplete		X	
HYDRAULIC SYSTEM				
Lines, hoses and fittings	Kinked, broken; leaks or seeps, checked or cracked; fungus growth; loss of flexibility	X		
Pump and/or fluid reservoir	Body cracked or broken; stage III corrosion	X		
	Stage II corrosion on internal surfaces		X	
Cylinders and valves	Stage III corrosion.	X		
	Stage II corrosion on rods and/or internal surfaces of cylinders and valves.		X	

Item	Defect	Classification		
		Major		Minor
		A	B	
Operating fluid Gaskets and seals Filters	Contaminated Deteriorated; leaks or seeps. Stage III corrosion on internal surfaces Stage II corrosion on internal surfaces; element contaminated.	X X X	X X	
CLUTCH ASSEMBLY: Bearings, shafts, linkage and springs	Stage III corrosion; frozen Stage II corrosion	X X	 X X	
Metal disks and plates	Stage III corrosion Stage II corrosion	X X	 X	
Fiber disks and bands	Deteriorated; punctured or torn	X		
Lubricant	Contaminated		X	
BRAKE ASSEMBLY: Drum and/or shoes	Stage IV corrosion Stage III corrosion Stage II corrosion	X X	 X X	 X
Springs, anchors, cable, yokes and/or linkage	Stage IV corrosion; distorted or broken. Stage III corrosion; frozen Stage II corrosion	X X	 X X	 X
Fluid reservoirs, wheel and master cylinders	Stage III corrosion on internal surfaces; stage IV corrosion on external surfaces, leaks; boots deteriorated, frozen Stage III corrosion on external surfaces, stage II corrosion on internal surfaces.	X X	 X	
Air compressor and air reservoir	Stage III corrosion on internal surfaces, stage IV corrosion on external surfaces. Stage II corrosion on internal surfaces, stage III corrosion on external surfaces.	X X	 X	
Cylinder actuating rods	Stage IV corrosion Stage III corrosion Stage II corrosion	X X	 X X	 X
Lines, hoses and fittings	Checked, cracked, kinked, split or cut, leaks, loss of flexibility	X		
GOVERNORS:	Stage IV corrosion, linkage broken Stage III corrosion, linkage frozen Stage II corrosion	X X	 X X	 X
POWER TRAIN: Transmission (standard)	Stage III corrosion on internal surfaces, seals deteriorated, leaks Stage II corrosion on internal surfaces, contaminated lubricant	X X	 X X	
Final drive	Stage III corrosion on shafts, pinion, bearings or gears, deteriorated seals, leaks Stage II corrosion on shafts, pinion, bearings or gears, lubricant contaminated	X X	 X	
Reduction drive	Stage III corrosion on shafts, case, gears, bearings or chains, deteriorated seals, leaks Stage II corrosion on shafts, gears, bearings or chains, lubricant contaminated	X X	 X	
Differential	Stage III corrosion on housing, gears, shafts, bearings or pinion, deteriorated seals, leaks Stage II corrosion on gears, shafts, bearings or pinion, lubricant contaminated	X X	 X	
Transfer case	Stage III corrosion on internal surfaces, deteriorated seals, leaks. Stage II corrosion on internal surfaces, lubricant contaminated	X X	 X X	
DRIVE CHAINS: Precision	Stage III corrosion, cracked or broken links Stage II corrosion; pins and/or rollers frozen	X X	 X X	
Non-precision	Stage IV corrosion, cracked or broken links Stage III corrosion, pins and/or rollers frozen Stage II corrosion	X X X	 X X	 X
CHASSIS: Frame and springs	Cracked or broken welds, stage IV corrosion Stage III corrosion Stage II corrosion	X X X	 X X	 X

Item	Defect	Classification		
		Major		Minor
		A	B	
Tires	Checks and cracks extending to the cord; cut or punctured; bulges indicating ply separation; chunking of rubber	X		
Wheels	Distorted; broken; stage IV corrosion	X		
	Stage III corrosion		X	
	Stage II corrosion			X
STEERING SYSTEM:				
Actuating cylinders	Stage IV corrosion; shaft bent or distorted; seals leaking	X		
	Stage III corrosion on shafts		X	
	Stage II corrosion on shafts			X
Linkage	Stage IV corrosion; bent or distorted	X		
	Stage III corrosion; frozen		X	
	Stage II corrosion			X
Gear case	Stage IV corrosion on internal surfaces; deteriorated seals; leaks . .	X		
	Stage III corrosion on internal surfaces		X	
	Stage II corrosion on internal surfaces			X
Fluid reservoir	Stage III corrosion on internal surfaces; stage IV corrosion on external surfaces; leaks	X		
	Stage II corrosion on internal surfaces; fluid contaminated.		X	
MAST ASSEMBLY				
	Bent or distorted; Stage IV corrosion	X		
	Rollers frozen; Stage III corrosion		X	
	Stage II corrosion			X

APPENDIX C-D
ITEM DEFECTS FOR TRACTORS, WAREHOUSE

Item	Defect	Classification		
		Major		Minor
		A	B	
ENGINE ASSEMBLY:				
Valves, rocker arm assembly and combustion chambers	Stage II corrosion	X		
	Stage I corrosion		X	
Piston assembly and cylinder walls	Stage II corrosion	X		
	Stage I corrosion		X	
Flywheel and ring gear	Stage IV corrosion; ring gear chipped, cracked or broken	X		
	Stage III corrosion		X	
Air cleaner	Stage II corrosion			X
	Stage IV corrosion	X		
	Stage III corrosion		X	
Cooling system: Radiator	Stage II corrosion			X
	Stage IV corrosion on internal surfaces, leaks	X		
	Stage III corrosion on internal surfaces; collant contaminated		X	
Shutters and controls	Stage II corrosion on internal surfaces			X
	Stage IV corrosion	X		
	Frozen, stage III corrosion		X	
Fan	Stage II corrosion			X
	Blades broken, stage IV corrosion	X		
	Bent, stage III corrosion		X	
Cooling fins	Stage II corrosion			X
	Bent or otherwise damaged to the extend repair is required		X	
	Deteriorated; leaks or seeps	X		
Seals and gaskets	Checking or cracking, frayed or cut, loss of flexibility, fungus growth, broken reinforcing		X	
	Hoses and belts	X		
Pulleys	Cracked, broken, stage IV corrosion	X		
	Stage III corrosion		X	
	Stage II corrosion			X
Water pump	Stage IV corrosion on internal surfaces, frozen, leaks	X		
	Stage III corrosion on internal surfaces		X	
	Stage II corrosion on internal surfaces			X
Fuel system				
Tanks				
Internal surfaces	Stage III corrosion	X		
	Stage II corrosion, coating peeling or flaking		X	
External surfaces	Stage IV corrosion	X		
	Stage III corrosion		X	
	Stage II corrosion			X
Lines, hoses and connectors	Cracked or checked, kinked, broken; fungus growth	X		
Filters and sediment bowls	Stage IV corrosion on internal surfaces; cracked or broken	X		
	Stage III corrosion on internal surfaces; element deteriorated or contaminated		X	
	Stage II corrosion on internal surfaces			X
Carburetor, injectors or nozzles	Stage III corrosion, cracked or broken	X		
	Stage II corrosion, contaminated		X	
	Deteriorated: leaks or seeps	X		
Exhaust system				
Rain cap	Stage IV corrosion, cracked, broken or missing	X		
	Stage III corrosion		X	
	Stage II corrosion			X
Brackets and hangers	Stage IV corrosion, cracked or broken	X		
	Stage III corrosion		X	
	Stage II corrosion			X
Intake and exhaust manifolds, muffler and pipes	Stage IV corrosion, punctured	X		
	Stage III corrosion		X	
	Stage II corrosion			X
ELECTRICAL SYSTEM				
Wiring	Broken strands, cracked insulation, fungus growth	X		
	Frayed, checked, loss of flexibility		X	

Item	Defect	Classification		
		Major		Minor
		A	B	
Terminals and connections	Stage III corrosion; broken terminals	X		
Spark plugs	Stage II corrosion		X	
Switches, regulators, relays, magnetos and controllers	Stage III corrosion on spark point end; ceramic insulator broken		X	
Generator assemblies, electric motors and starters	Stage II corrosion on spark point end			X
Lights and reflectors	Stage III corrosion; broken; frozen	X		
	Stage II corrosion		X	
	Stage III corrosion; frozen	X		
	Stage II corrosion		X	
	Stage III corrosion; cracked or broken		X	
	Stage II corrosion			X
LUBRICATION SYSTEM				
Lines, hoses and fittings	Kinked, broken; leaks or seeps, checked or cracked; fungus growth	X		
Filters	Stage III corrosion on internal or external surfaces	X		
Lubricant	Stage II corrosion on internal surfaces, element deteriorated or contaminated		X	
Seals	Contaminated		X	
	Deteriorated, leaks or seeps	X		
CONTROLS AND INSTRUMENTS				
	Stage III corrosion, cracked or broken, inoperable, dial face illegible	X		
	Stage II corrosion, linkage frozen		X	
BASIC ISSUE ITEMS (BII)				
	Missing	X		
	Deteriorated or damaged		X	
COMPONENTS AND ACCESSORIES				
	Missing, incomplete	X		
	Deteriorated or damaged		X	
DRIVE BELTS AND HOSES				
	Checking, cracking, broken reinforcing, frayed, cut, loss of flexibility and resiliency, fungus growth		X	
GEARS				
Exposed	Chipped, cracked or broken, stage IV corrosion	X		
	Stage III corrosion		X	
	Stage II corrosion			X
Enclosed	Chipped, cracked or broken, stage III corrosion	X		
	Stage II corrosion, lubricant contaminated		X	
PULLEYS AND DRIVE SPROCKETS				
	Cracked or broken, stage IV corrosion	X		
	Stage III corrosion		X	
	Stage II corrosion			X
EXTERIOR SURFACES AND HOUSINGS				
General	Fractures, base mounting and/or fastening devices broken or missing	X		
	Dents		X	
Painted surfaces	Stage III corrosion, chipped or abraded	X		
	Stage II corrosion		X	
Unpainted noncritical surfaces	Stage IV corrosion	X		
	Stage III corrosion		X	
	Stage II corrosion			X
LIFTING AND/OR TIE DOWN DEVICES				
	Cracked, broken or distorted		X	
WARNING OR CAUTION PLATES				
	Illegible, missing	X		
MODIFICATION WORK ORDER (MWO)				
Urgent classification	Not applied	X		
Routine classification	Not applied		X	
EQUIPMENT LOG BOOK (TM 38-750)				
	Missing	X		
	Incomplete		X	
CLUTCH ASSEMBLY				
Bearings, shafts, linkage and springs	Stage III corrosion, frozen	X		
	Stage II corrosion		X	
Metal disks and plates	Stage III corrosion	X		
	Stage II corrosion		X	
Fiber disks and bands	Deteriorated, punctured or torn	X		
Lubricant	Contaminated		X	

Item	Defect	Classification		
		Major		Minor
		A	B	
BRAKE ASSEMBLY:				
Drum and/or shoes	Stage IV corrosion Stage III corrosion Stage II corrosion	X	X	X
Springs, anchors, cable, yokes and/or linkage	Stage IV corrosion; distorted or broken Stage III corrosion, frozen Stage II corrosion	X	X	X
Fluid reservoirs, wheel and master cylinders	Stage III corrosion on internal surfaces; stage IV corrosion on external surfaces; leaks, boots deteriorated, frozen Stage III corrosion on external surfaces, stage II corrosion on internal surfaces	X	X	
Air compressor and air reservoir	Stage III corrosion on internal surfaces, stage IV corrosion on external surfaces Stage II corrosion on internal surfaces, stage III corrosion on external surfaces	X	X	
Cylinder actuating rods	Stage IV corrosion Stage III corrosion Stage II corrosion	X	X	X
Lines, hoses and fittings	Checked; cracked, kinked, split or cut, leaks, loss of flexibility.	X		
GOVERNORS				
	Stage IV corrosion, linkage broken Stage III corrosion, linkage frozen Stage II corrosion	X	X	X
POWER TRAIN				
Transmission (standard)	Stage III corrosion on internal surfaces, seals deteriorated, leaks Stage II corrosion on internal surfaces, contaminated lubricant	X	X	
Final drive	Stage III corrosion on shafts, pinion, bearings or gears, deteriorated seals, leaks Stage II corrosion on shafts, pinion, bearings or gears, lubricant contaminated	X	X	
Reduction drive	Stage III corrosion on shafts, case, gears, bearings or chains, deteriorated seals, leaks Stage II corrosion on shafts, gears, bearings or chains, lubricant contaminated	X	X	
Differential	Stage III corrosion on housing, gears, shafts, bearings or pinion, deteriorated seals, leaks Stage II corrosion on gears, shafts, bearings or pinion, lubricant contaminated	X	X	
Transfer case	Stage III corrosion on internal surfaces, deteriorated seals; leaks Stage II corrosion on internal surfaces, lubricant contaminated	X	X	
DRIVE CHAINS				
Precision	Stage III corrosion, cracked or broken links Stage II corrosion, pins and/or rollers frozen	X	X	
Non-precision	Stage IV corrosion, cracked or broken links Stage III corrosion, pins and/or rollers frozen Stage II corrosion	X	X	X
CHASSIS				
Frame and springs	Cracked or broken welds, stage IV corrosion Stage III corrosion Stage II corrosion	X	X	X
Tires	Checks and cracks extending to the cord, cut or punctured, bulges indicating ply separation, chunking of rubber	X		
Wheels	Distorted, broken, stage IV corrosion Stage III corrosion Stage II corrosion	X	X	X
STEERING SYSTEM				
Actuating cylinders	Stage IV corrosion, shaft bent or distorted, seals leaking Stage III corrosion on shafts Stage II corrosion on shafts	X	X	X
Linkage	Stage IV corrosion, bent or distorted Stage III corrosion, frozen Stage II corrosion	X	X	X

SB 740-97-3900

Item	Defect	Classification		
		Major		Minor
		A	B	
Gear case	Stage IV corrosion on internal surfaces; deteriorated seals, leaks .	x		
	Stage III corrosion on internal surfaces		x	
	Stage II corrosion on internal surfaces			x
Fluid reservoir	Stage III corrosion on internal surfaces, stage IV corrosion on external surfaces, leaks	x		
	Stage II corrosion on internal surfaces, fluid contaminated		x	

APPENDIX C-E
ITEM DEFECTS FOR CRANE TRACKS, WAREHOUSE

Item	Defect	Classification		
		Major		Minor
		A	B	
ENGINE ASSEMBLY:				
Valves, rocker arm assembly and combustion chambers	Stage II corrosion	X		
	Stage I corrosion		X	
Piston assembly and cylinder walls	Stage II corrosion	X		
	Stage I corrosion		X	
Flywheel and ring gear	Stage IV corrosion, ring gear chipped, cracked or broken	X		
	Stage III corrosion		X	
Air cleaner	Stage II corrosion			X
	Stage IV corrosion	X		
	Stage III corrosion		X	
	Stage II corrosion			X
Cooling system				
Radiator	Stage IV corrosion on internal surfaces, leaks	X		
	Stage III corrosion on internal surfaces, collant contaminated		X	
	Stage II corrosion on internal surfaces			X
Shuttles and controls	Stage IV corrosion	X		
	Frozen, stage III corrosion		X	
	Stage II corrosion			X
Fan	Blades broken, stage IV corrosion	X		
	Bent, stage III corrosion		X	
	Stage II corrosion			X
Cooling fins	Bent or otherwise damaged to the extend repair is required		X	
Seals and gaskets	Deteriorated, leaks or seeps	X		
Hoses and belts	Checking or cracking, frayed or cut, loss of flexibility, fungus growth, broken reinforcing		X	
Pulleys	Cracked, broken, stage IV corrosion	X		
	Stage III corrosion		X	
	Stage II corrosion			X
Water pump	Stage IV corrosion on internal surfaces, frozen, leaks	X		
	Stage III corrosion on internal surfaces		X	
	Stage II corrosion on internal surfaces			X
Fuel system				
Tanks				
Internal surfaces	Stage III corrosion	X		
	Stage II corrosion, coating peeling or flaking		X	
External surfaces	Stage IV corrosion	X		
	Stage III corrosion		X	
	Stage II corrosion			X
Lines, hoses and connectors	Cracked or checked, kinked, broken; fungus growth	X		
Filters and sediment bowls	Stage IV corrosion on internal surfaces, cracked or broken	X		
	Stage III corrosion on internal surfaces, element deteriorated or contaminated		X	
	Stage II corrosion on internal surfaces			X
Carburetor, injectors or nozzles	Stage III corrosion, cracked or broken	X		
	Stage II corrosion, contaminated		X	
Seals	Deteriorated, leaks or seeps	X		
Exhaust system				
Rain cap	Stage IV corrosion, cracked, broken or missing	X		
	Stage III corrosion		X	
	Stage II corrosion			X
Brackets and hangers	Stage IV corrosion, cracked or broken	X		
	Stage III corrosion		X	
	Stage II corrosion			X
Intake and exhaust manifolds, muffler and pipes				
	Stage IV corrosion punctured	X		
	Stage III corrosion		X	
	Stage II corrosion			X
ELECTRICAL SYSTEM				
Wiring	Broken strands, cracked insulation fungus growth	X		
	Frayed, checked, loss of flexibility		X	

Item	Defect	Classification		
		Major		Minor
		A	B	
Terminals and connections	Stage III corrosion, broken terminals	X		
Spark plugs	Stage II corrosion		X	
	Stage III corrosion on spark point end; ceramic insulator broken		X	
Switches, regulators, relays, magnetos and controllers	Stage II corrosion on spark point end			X
	Stage III corrosion; broken, frozen	X		
Generator assemblies, electric motors and starters	Stage II corrosion		X	
	Stage III corrosion, frozen	X		
Lights and reflectors	Stage II corrosion		X	
	Stage III corrosion, cracked or broken		X	
	Stage II corrosion			X
LUBRICATION SYSTEM				
Lines, hoses and fittings	Kinked, broken, leaks or seeps, checked or cracked; fungus growth	X		
	Filters	Stage III corrosion on internal or external surfaces	X	
Lubricant	Stage II corrosion on internal surfaces, element deteriorated or contaminated			X
	Seals	Contaminated		X
	Deteriorated, leaks or seeps.	X		
CONTROLS AND INSTRUMENTS				
	Stage III corrosion, cracked or broken, inoperable, dial face illegible	X		
	Stage II corrosion, linkage frozen		X	
BASIC ISSUE ITEMS (BII)				
	Missing	X		
	Deteriorated or damaged		X	
COMPONENTS AND ACCESSORIES				
	Missing, incomplete	X		
	Deteriorated or damaged		X	
DRIVE BELTS AND HOSES				
	Checking, cracking, broken reinforcing, frayed, cut, loss of flexibility and resiliency, fungus growth		X	
GEARS				
Exposed	Chipped, cracked or broken, stage IV corrosion	X		
	Stage III corrosion		X	
Enclosed	Stage II corrosion			X
	Chipped, cracked or broken, stage III corrosion		X	
	Stage II corrosion, lubricant contaminated		X	
PULLEYS AND DRIVE SPROCKETS				
	Cracked or broken, stage IV corrosion	X		
	Stage III corrosion		X	
	Stage II corrosion			X
EXTERIOR SURFACES AND HOUSINGS				
General	Fractures, base mounting and/or fastening devices broken or missing	X		
	Dents		X	
Painted surfaces	Stage III corrosion, chipped or abraded	X		
	Stage II corrosion		X	
Unpainted noncritical surfaces	Stage IV corrosion	X		
	Stage III corrosion		X	
	Stage II corrosion			X
LIFTING AND/OR TIE DOWN DEVICES				
	Cracked, broken or distorted		X	
WARNING OR CAUTION PLATES				
	Illegible, missing	X		
MODIFICATION WORK ORDER (MWO)				
Urgent classification	Not applied	X		
Routine classification	Not applied		X	
EQUIPMENT LOG BOOK (TM 38-750)				
	Missing	X		
	Incomplete		X	
HYDRAULIC SYSTEM				
Lines, hoses and fittings	Kinked, broken, leaks or seeps, checked or cracked, fungus growth, loss of flexibility	X		
Pump and/or fluid reservoir	Body cracked or broken, stage III corrosion	X		
	Stage II corrosion on internal surfaces		X	

Item	Defect	Classification		
		Major		Minor
		A	B	
Cylinders and valves	Stage III corrosion	X		
	Stage II corrosion on rods and/or internal surfaces of cylinders and valves		X	
Operating fluid	Contaminated		X	
Gaskets and seals	Deteriorated; leaks or seeps	X		
Filters	Stage III corrosion on internal surfaces	X		
	Stage II corrosion on internal surfaces, element contaminated		X	
CLUTCH ASSEMBLY				
Bearings, shafts, linkage and springs	Stage III corrosion, frozen	X		
	Stage II corrosion		X	
Metal disks and plates	Stage III corrosion	X		
	Stage II corrosion		X	
Fiber disks and bands	Deteriorated, punctured or torn	X		
Lubricant	Contaminated		X	
BRAKE ASSEMBLY				
Drum and/or shoes	Stage IV corrosion	X		
	Stage III corrosion		X	
	Stage II corrosion			X
Springs, anchors, cable, yokes and/or linkage	Stage IV corrosion, distorted or broken	X		
	Stage III corrosion, frozen		X	
	Stage II corrosion			X
Fluid reservoirs, wheel and master cylinders	Stage III corrosion on internal surfaces, stage IV corrosion on external surfaces, leaks, boots deteriorated, frozen	X		
	Stage III corrosion on external surfaces, stage II corrosion on internal surfaces		X	
Air compressor and air reservoir	Stage III corrosion on internal surfaces, stage IV corrosion on external surfaces	X		
	Stage II corrosion on internal surfaces, stage III corrosion on external surfaces		X	
Cylinder actuating rods	Stage IV corrosion	X		
	Stage III corrosion		X	
	Stage II corrosion			X
Lines, hoses and fittings	Checked, cracked, kinked, split or cut, leaks, loss of flexibility	X		
GOVERNORS				
	Stage IV corrosion, linkage broken	X		
	Stage III corrosion, linkage frozen		X	
	Stage II corrosion			X
POWER TRAIN				
Transmission (standard)	Stage III corrosion on internal surfaces, seals deteriorated, leak	X		
	Stage II corrosion on internal surfaces, contaminated lubricant		X	
Final drive	Stage III corrosion on shafts, pinion, bearings or gears, deteriorated seals, leaks	X		
	Stage II corrosion on shafts, pinion, bearings or gears, lubricant contaminated		X	
Reduction drive	Stage III corrosion on shafts, case, gears, bearings or chains, deteriorated seals, leaks	X		
	Stage II corrosion on shafts, gears, bearings or chains, lubricant contaminated		X	
Differential	Stage III corrosion on housing, gears, shafts, bearings or pinion, deteriorated seals, leaks	X		
	Stage II corrosion on gears, shafts, bearings or pinion, lubricant contaminated		X	
Transfer case	Stage III corrosion on internal surfaces, deteriorated seals, leaks	X		
	Stage II corrosion on internal surfaces, lubricant contaminated		X	
Linkage	Stage IV corrosion, bent or distorted	X		
	Stage III corrosion, frozen		X	
	Stage II corrosion			X
Gear case	Stage IV corrosion on internal surfaces, deteriorated seals, leaks	X		
	Stage III corrosion on internal surfaces		X	

Item	Defect	Classification		
		Major		Minor
		A	B	
Fluid reservoir	Stage II corrosion on internal surfaces. Stage III corrosion on internal surfaces; stage IV corrosion on external surfaces; leaks Stage II corrosion on internal surfaces; fluid contaminated.	X	X	X
INCH ASSEMBLY.				
Drums, brake and/or drive assembly	Stage IV corrosion. Stage III corrosion; frozen Stage II corrosion	X	X	X
Wire rope	Stage IV corrosion; broken strands Stage III corrosion. Stage II corrosion	X	X	X
DRIVE CHAINS				
Precision	Stage III corrosion, cracked or broken links Stage II corrosion, pins and/or rollers frozen	X	X	
Non-precision	Stage IV corrosion; cracked or broken links Stage III corrosion, pins and/or rollers frozen Stage II corrosion	X	X	X
CHASSIS				
Frame and springs	Cracked or broken welds, stage IV corrosion. Stage III corrosion Stage II corrosion	X	X	X
Tires	Checks and cracks extending to the cord, cut or punctured, bulges indicating ply separation, chunking of rubber	X		
Wheels	Distorted, broken, stage IV corrosion Stage III corrosion. Stage II corrosion	X	X	X
STEERING SYSTEM				
Actuating cylinders	Stage IV corrosion, shaft bent or distorted, seals leaking Stage III corrosion on shafts Stage II corrosion on shafts	X	X	X

By Order of the Secretary of the Army:

CREIGHTON W. ABRAMS
General, United States Army
Chief of Staff

Official:
ERNE L. BOWERS

Major General, United States Army
The Adjutant General

Distribution:

To be distributed in accordance with DA Form 12-21 (qty rqr block No. 92) requirements for FSC Group 3910-IL

★ U.S. GOVERNMENT PRINTING OFFICE: 1973-769749/460

SB 740-97-3900 MATERIALS HANDLING EQUIPMENT—1973

END

7-18-83

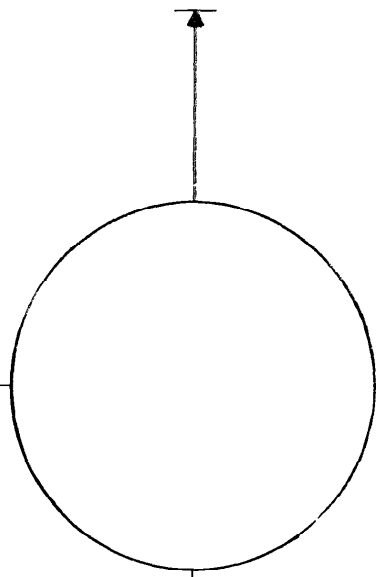
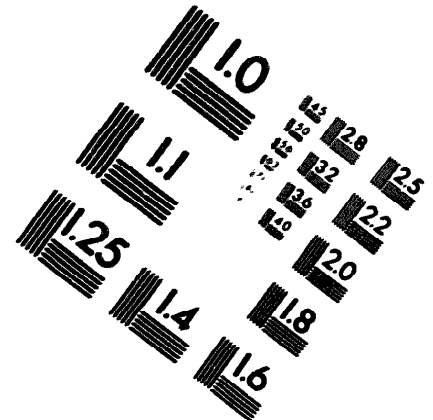
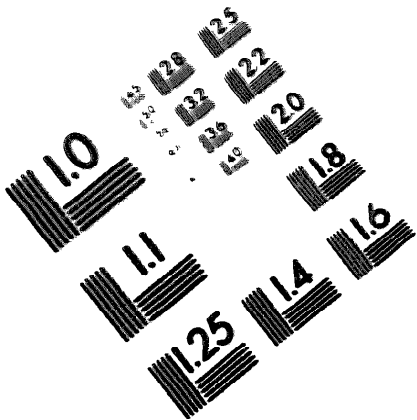
DATE





DEPARTMENT OF THE ARMY

MICROFORM
TEST TARGET



150 MM

10 mm (e = 81 mm)

ABCDEFGHIJKLMN OPQRSTUVWXYZ 1234567890
abcdefghijklmnopqrstuvwxyz \$%&' /%# 1/2 1/4 3/4 — = + x & @ *

15 mm (e = 109 mm)

ABCDEFGHIJKLMN OPQRSTUVWXYZ 1234567890
abcdefghijklmnopqrstuvwxyz \$%&' /%# 1/2 1/4 3/4 — = + x & @ *

20 mm (e = 137 mm)

ABCDEFGHIJKLMN OPQRSTUVWXYZ
abcdefghijklmnopqrstuvwxyz
1234567890 \$%&' /%# 1/2 1/4 3/4 — = + x & @ *

2.5 mm (e = 1.77 mm)

ABCDEFGHIJKLMN OPQRSTUVWXYZ
abcdefghijklmnopqrstuvwxyz
1234567890 \$%&' /%# 1/2 1/4 3/4 — = + x & @ *

10 mm (e = 81 mm)

ABCDEFGHIJKLMN OPQRSTUVWXYZ 1234567890
abcdefghijklmnopqrstuvwxyz \$%&' /%# 1/2 1/4 3/4 — = + x & @ *

15 mm (e = 109 mm)

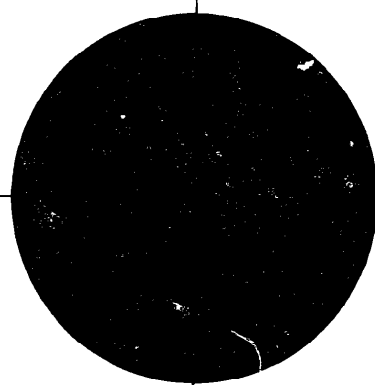
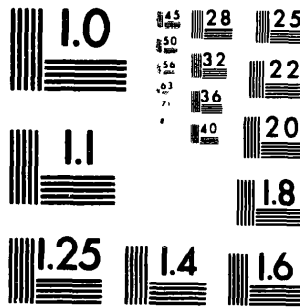
ABCDEFGHIJKLMN OPQRSTUVWXYZ 1234567890
abcdefghijklmnopqrstuvwxyz \$%&' /%# 1/2 1/4 3/4 — = + x & @ *

20 mm (e = 137 mm)

ABCDEFGHIJKLMN OPQRSTUVWXYZ
abcdefghijklmnopqrstuvwxyz
1234567890 \$%&' /%# 1/2 1/4 3/4 — = + x & @ *

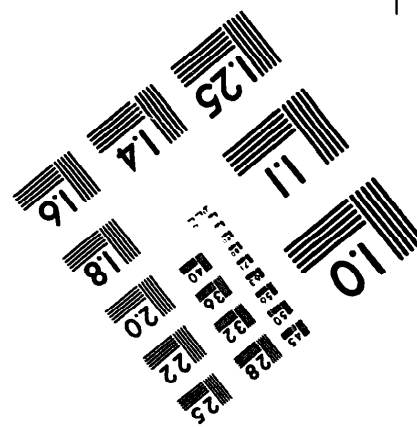
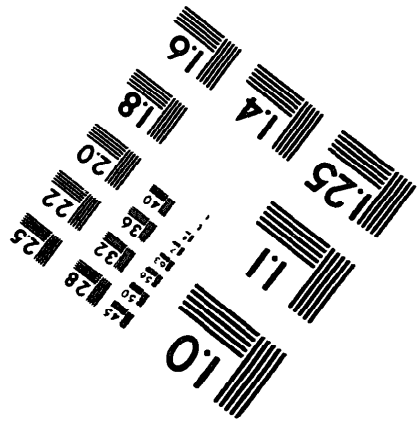
2.5 mm (e = 1.77 mm)

ABCDEFGHIJKLMN OPQRSTUVWXYZ
abcdefghijklmnopqrstuvwxyz
1234567890 \$%&' /%# 1/2 1/4 3/4 — = + x & @ *



200 MM

250 MM



END

7-18-83

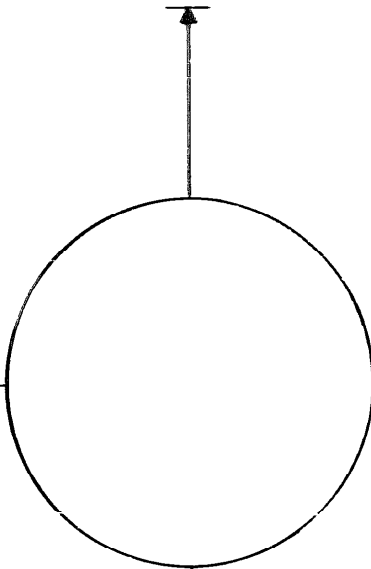
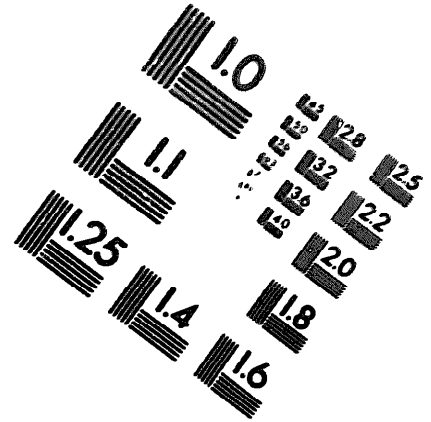
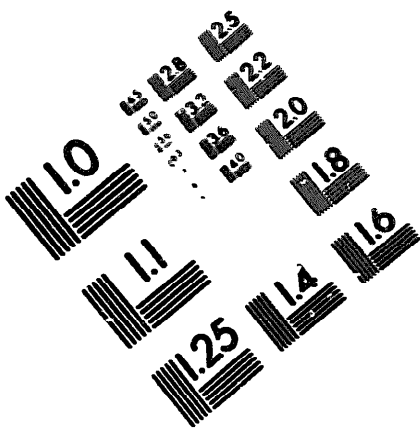
DATE





DEPARTMENT OF THE ARMY

MICROFORM
TEST TARGET



150 MM

1.0 mm (e= 81 mm)

ABCDEFGHIJKLMN**OP**QRSTUVWXYZ1234567890
abcdefghijklmnopqrstu**vwxyz**\$%&/'%# 1/2 1/4 3/4 —=+ x&@*

1.5 mm (e= 1 09 mm)

ABCDEFGHIJKLMN**OP**QRSTUVWXYZ1234567890
abcdefghijklmnopqrstu**vwxyz**\$%&/'%# 1/2 1/4 3/4 —=+ x&@*

2.0 mm (e= 1 37 mm)

ABCDEFGHIJKLMN**OP**QRSTUVWXYZ
abcdefghijklmnopqrstu**vwxyz**
1234567890\$%&/'%# 1/2 1/4 3/4 —=+ x&@*

2.5 mm (e= 1.77 mm)

ABCDEFGHIJKLMN**OP**QRSTUVWXYZ
abcdefghijklmnopqrstu**vwxyz**
1234567890\$%&/'%# 1/2 1/4 3/4 —=+ x&@*

1.0 mm (e= 81 mm)

ABCDEFGHIJKLMN**OP**QRSTUVWXYZ1234567890
abcdefghijklmnopqrstu**vwxyz**\$%&/'%# 1/2 1/4 3/4 —=+ x&@*

1.5 mm (e= 1 09 mm)

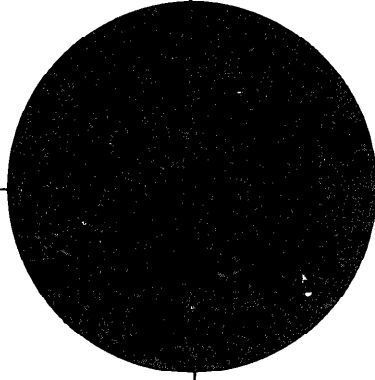
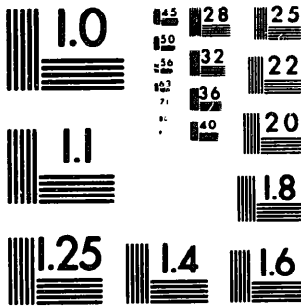
ABCDEFGHIJKLMN**OP**QRSTUVWXYZ1234567890
abcdefghijklmnopqrstu**vwxyz**\$%&/'%# 1/2 1/4 3/4 —=+ x&@*

2.0 mm (e= 1 37 mm)

ABCDEFGHIJKLMN**OP**QRSTUVWXYZ
abcdefghijklmnopqrstu**vwxyz**
1234567890\$%&/'%# 1/2 1/4 3/4 —=+ x&@*

2.5 mm (e= 1.77 mm)

ABCDEFGHIJKLMN**OP**QRSTUVWXYZ
abcdefghijklmnopqrstu**vwxyz**
1234567890\$%&/'%# 1/2 1/4 3/4 —=+ x&@*



200 MM

250 MM

